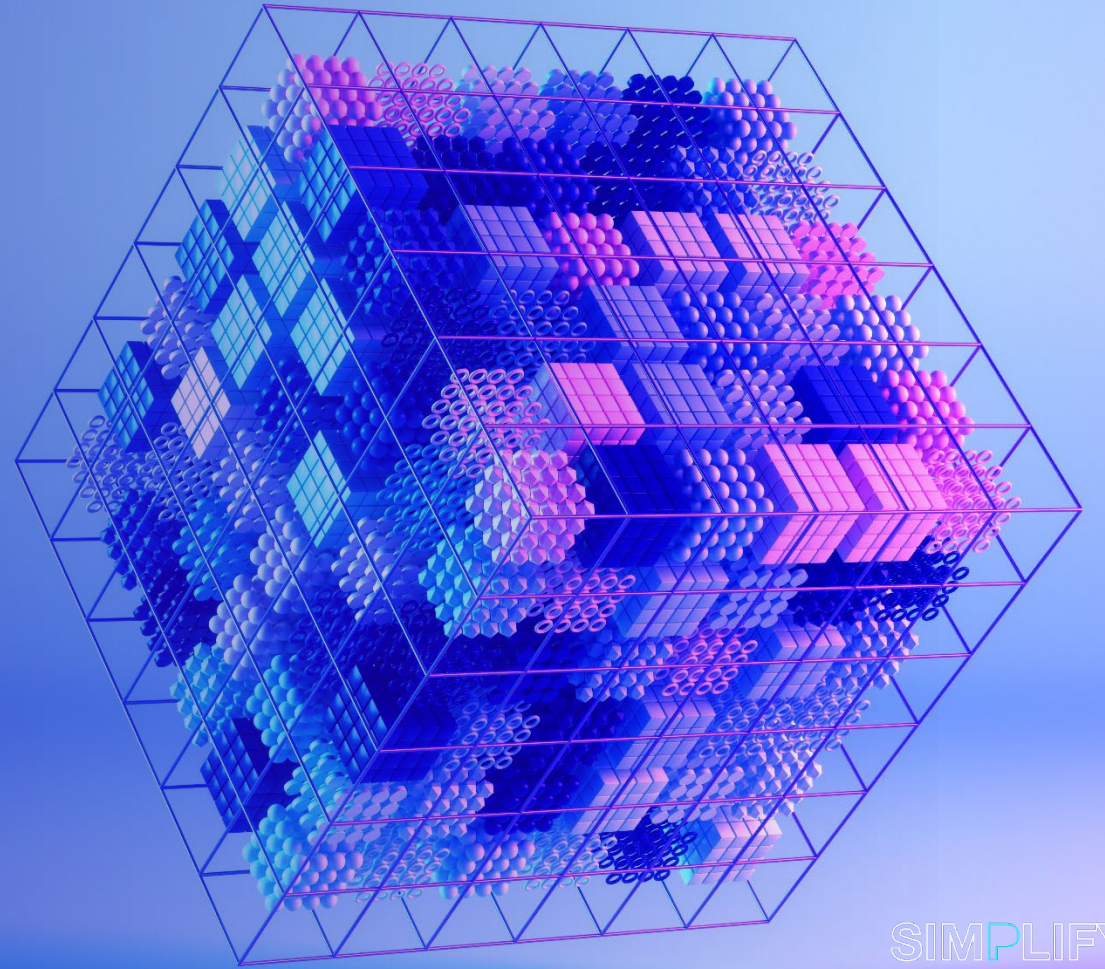


# Azure Cloud – Modernization of Apps, Data, & AI....are you ready?

John Thiele – Azure Solution Sales Specialist



JuiceIT2025

SIMPLIFY  
CONNECT  
PROTECT



# **Azure in region – Ten Years In....**

# Azure – Ten Years In



Azure became available in the region in late **2014**, Azure has now been a part of the local IT landscape for ten years.



Azure services have grown to over **300** types of services, now joined by a range of cutting-edge AI services.





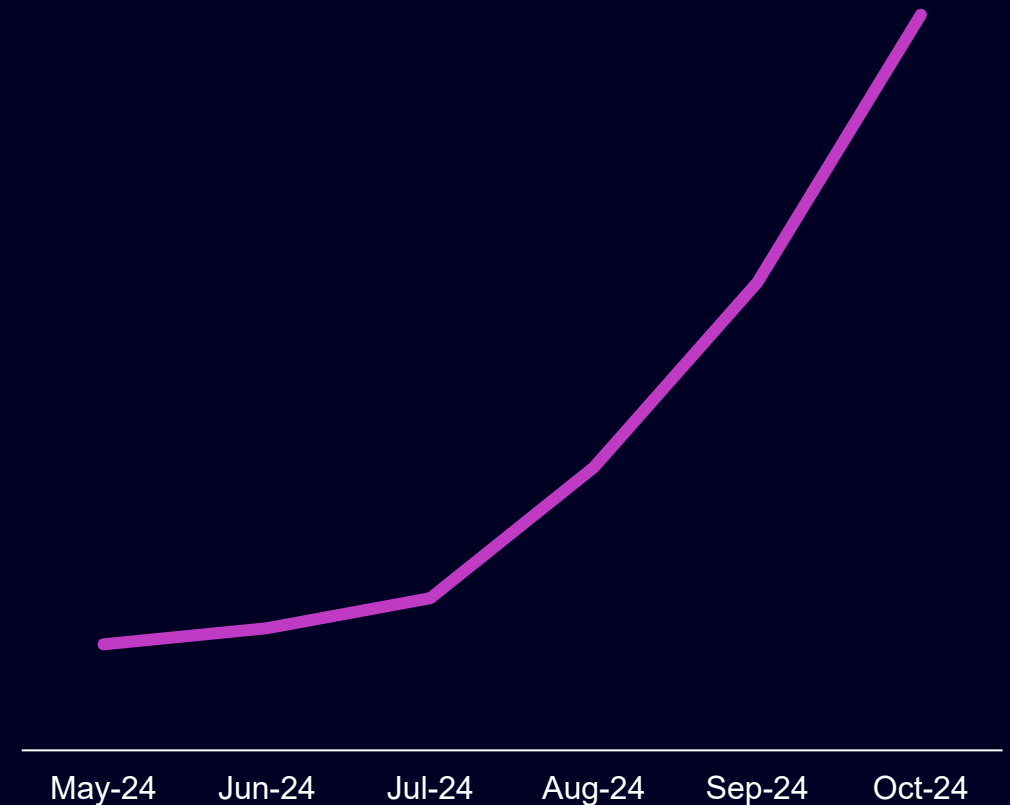
# Data#3 Azure Periodic Table of Elements

Choose category

 Entra ID	 Entra Domain Services								 Static Web App	 Notification Hub	 Logic App	 IoT Edge	 IoT Central	 Machine Learning	 Azure OpenAI	
 Entra ID B2C	 Entra ID B2B	 Managed Identity	 Verifiable Credentials	 Virtual Machine	 Virtual Desktop	 Quantum	 Kubernetes	 Container App	 App Service	 Function App	 SendGrid	 IoT Hub	 IoT Digital Twin	 Search	 Cognitive Services	
 Work Account	 Microsoft Account	 Continuous Access Evaluation	 Role Based Access Control	 BareMetal Instance	 Azure Local	 VMware Solution	 Kubernetes Fleet Manager	 Container App Environment	 App Service Environment	 Event Hub	 Power BI Embedded	 Service Bus	 Microsoft Fabric	 Language	 Bot Services	
 Identity Governance	 MFA	 Conditional Access	 Activity Log	 Extended Security Updates	 Azure Advisor	 Role	 Azure Monitor	 Log Analytics	 App Insights	 Enterprise App	 PostgreSQL	 Data Lake	 Databricks	 Speech	 Anomaly Detector	
 Key Vault	 Regulatory Compliance	 Resource Guard	 Application Security Group	 Policy	 Resource Group	 Cost Management	 Tags	 Automation Account	 Recovery Services	 Stream Analytics	 MySQL	 Maria DB	 Purview	 Translator	 Vision	
 Sentinel	 Defender for Cloud	 Azure Firewall	 Network Security Group	 Subscription	 Management Group	 Lighthouse	 Windows Admin Center	 ARC	 Azure Migrate	 Database Migration Service	 SQL Database	 Cosmos DB	 Analysis Services	 Content Moderator	 Document Intelligence	
 Front Door		 Application Gateway	 Load Balancer	 Bastion	 Peering	 Network Watcher	 Traffic Manager	 DNS	 App Proxy	 CDN	 SQL Managed Instance	 Data Factory	 Synapse	 Personaliser	 Immersive Reader	
 ExpressRoute		 Virtual Network Gateway	 Virtual WAN	 Local Network Gateway	 Virtual Network	 Data Gateway	 Route Server	 Private Link	 Service Endpoint	 Mobile Edge	 Storage Account	 Managed Disk	 Data Box	 Storage Sync	 Video Analyser	
			 Dev Box	 Bicep	 Blueprint	 Resource Manager	 Template Spec	 PowerShell and CLI	 DevTest Labs	 DevOps	 GitHub	 Visual Studio				

# Azure – Continued Investment

- Microsoft is investing \$5B over this year and next year to expand it's hyperscale cloud computing and AI infrastructure in Australia, increasing it's computing capacity by 250%.
- Addition of cutting-edge AI services / models.



Azure Open AI Service Consumption



# AI-Ready Infrastructure

# How do I make Azure AI-Ready?

1. “How did Microsoft get AI Ready?”
2. “How do I operationalize my AI solution?”
3. “What is the baseline landing zone to get the AI solution running?”
4. “How do I get my AI solution to safely access my data sources?”
5. “What are the networking requirements for my AI solution?”
6. “How do we migrate and secure our estate to enable AI at scale?”
7. “How do I secure my AI solution?”
8. “How do I monitor the cost of the AI solution?”
9. “What policies and protocols do I need to comply?”

# AI-Ready Infrastructure

## Landing Zone

- Enterprise Landing Zone aligned to Cloud Adoption Framework (CAF) and Well-Architected Framework (WAF).
- Segregation of resources.
- Well defined management structure and roles-based access control.

## Data

- Unified, readily accessible data.
- Business continuity and data protection.
- Data security and encryption.

## Network

- Well-defined virtual network topology.
- Azure network security (Firewall, DDoS, NSG's, Network Watcher).
- Private Endpoints and Private Links.
- Azure DNS, DNS Zones, and Private DNS Resolver.

## Security



**Defender for Cloud:** secure your Azure services, threat protection for AI workloads.



**Sentinel:** raise AI solution security posture with SIEM, automation, and response.



**Front Door Services/WAF/DDoS:** leverage edge services for CDN, web-application firewall, and DDoS protection.



**APIM:** apply enhanced security controls for APIs.



**Security Copilot:** manage security posture with natural language response and threat intelligence.

## Management



**Azure Monitor and Log Analytics:** manage with application logs, dashboard reports, monitoring, and alerting.



**Azure Policy:** use Azure Policies to audit/enforce compliance settings for applications, data, and infrastructure.



**Azure Copilot:** enhance management with an AI assistant that knows your environment.





# **Landing Zones and Core Infrastructure**

# Azure Landing Zone – a Foundation for Azure

Enterprise Enrolment and  
Billing



The right Azure licensing agreement type, billing model.

Identity and Access



Well-defined roles-based access control (RBAC), secure access to resources.

Network Topology



Structured virtual network topology supporting network security and connectivity to on-premises.

Resource Organization



Management groups, assignment of resources in subscriptions / resource groups, naming, and tagging.

Security and Compliance

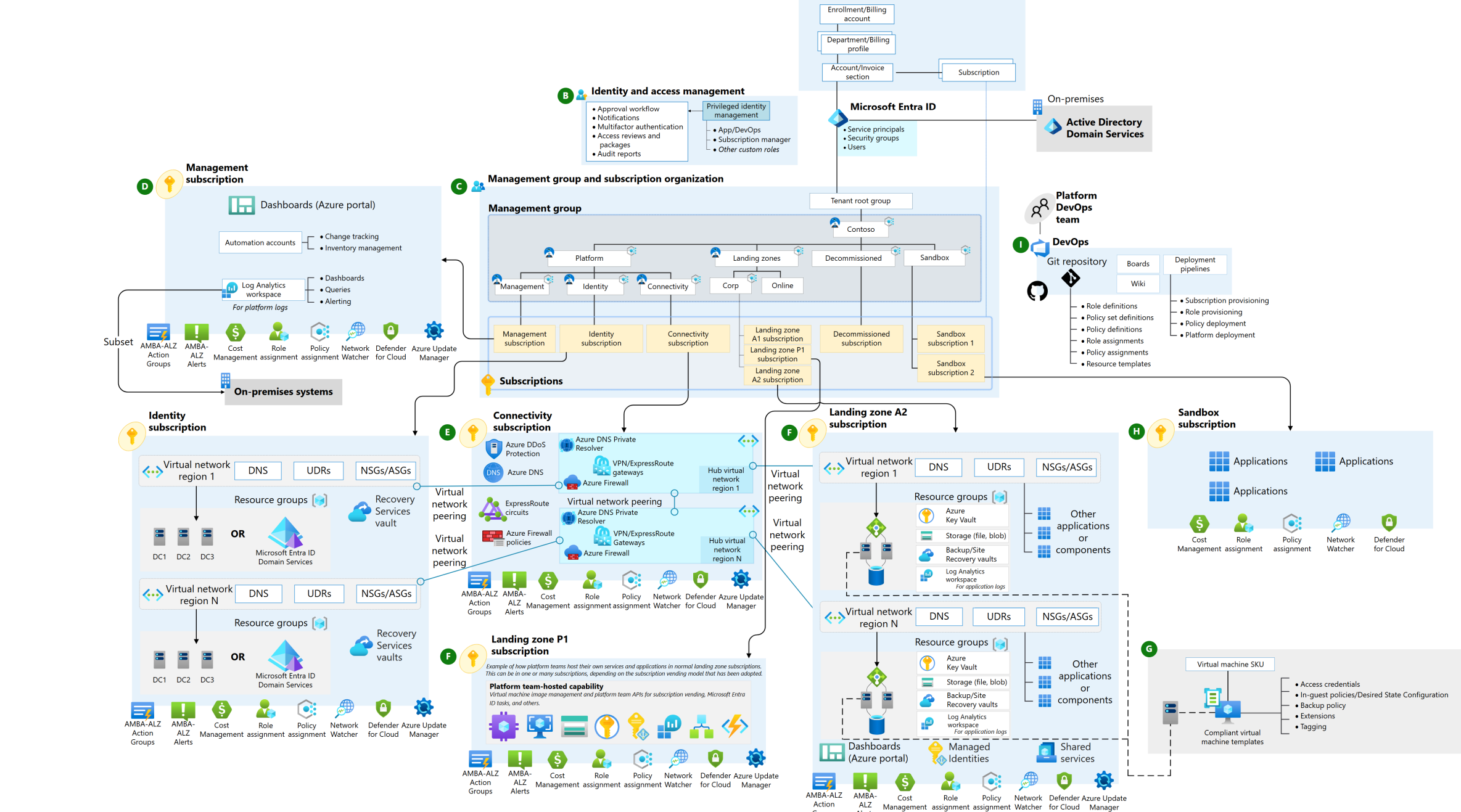


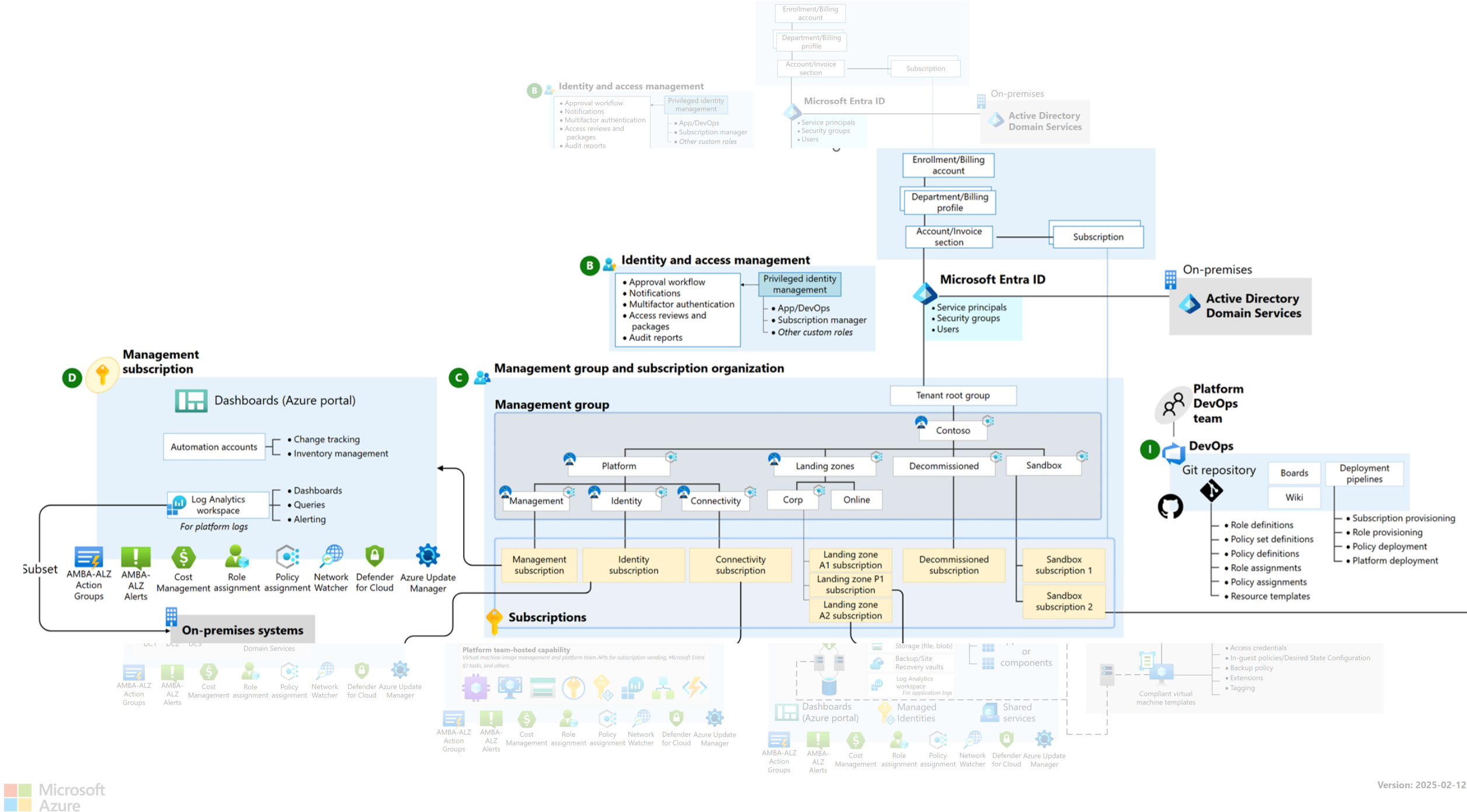
Defender for Cloud, Microsoft Sentinel, Microsoft Cloud Security Benchmark, built-in security initiatives

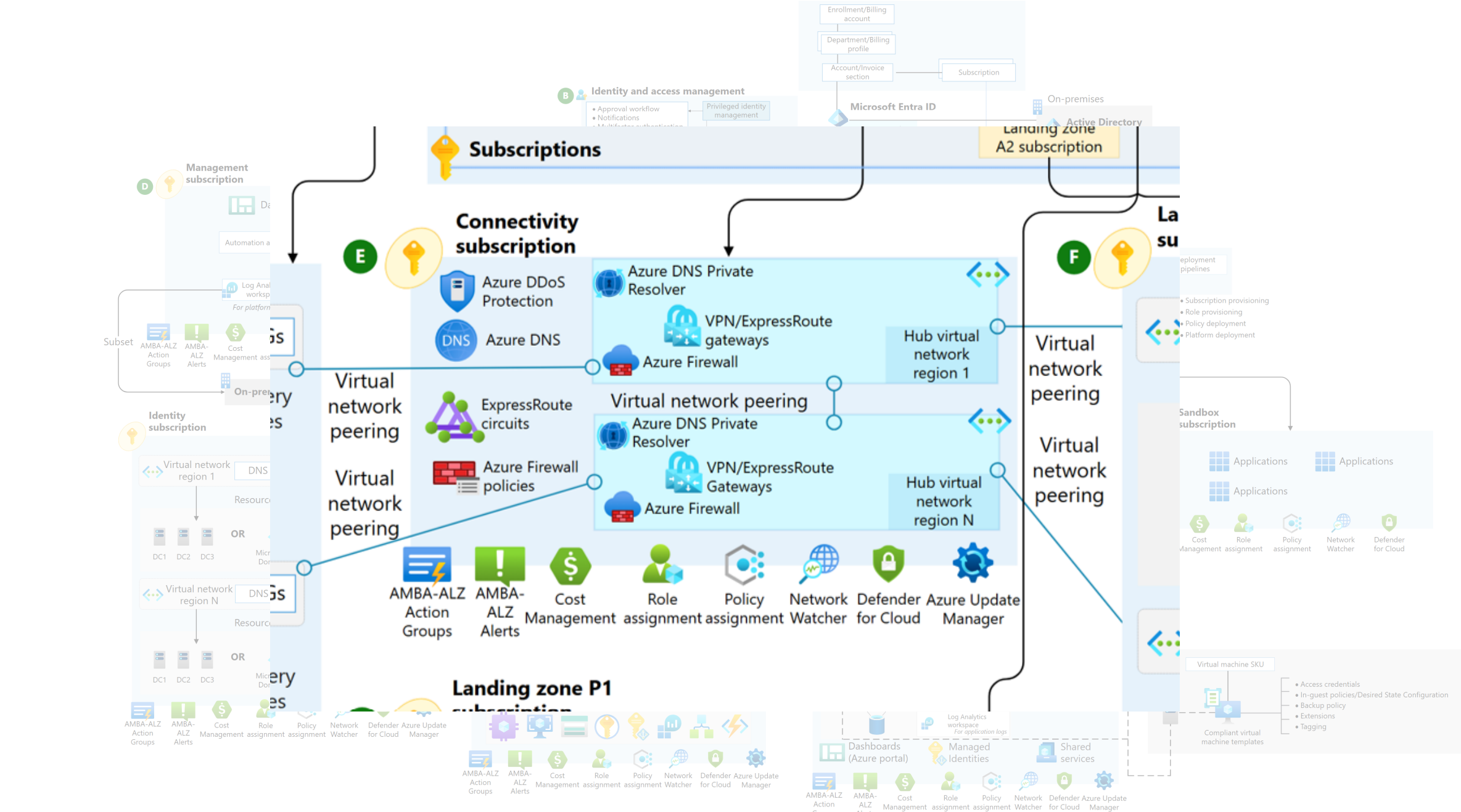
Governance



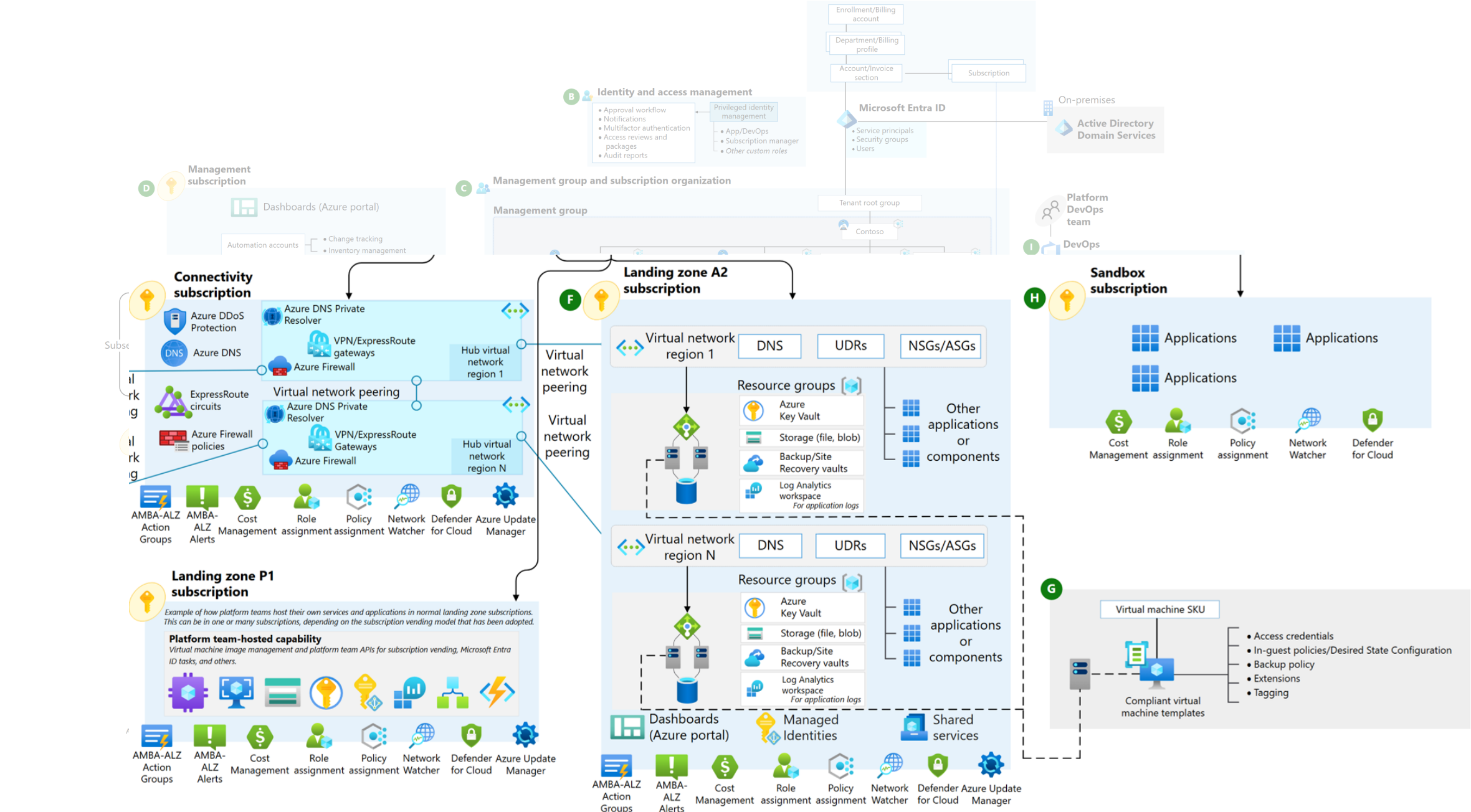
Azure Policy.











# Azure Landing Zone Deployment

- Manual
- Use of Accelerators
  - Microsoft
  - Data#3
- Infrastructure-as-code
  - Bicep
  - Terraform



# **Data and Analytics – a Foundation for AI**

# Challenges Generating Value from Data



Siloed systems, poor-quality data



Costly integration and ongoing maintenance



Technical platforms requiring advanced skills and limited resources



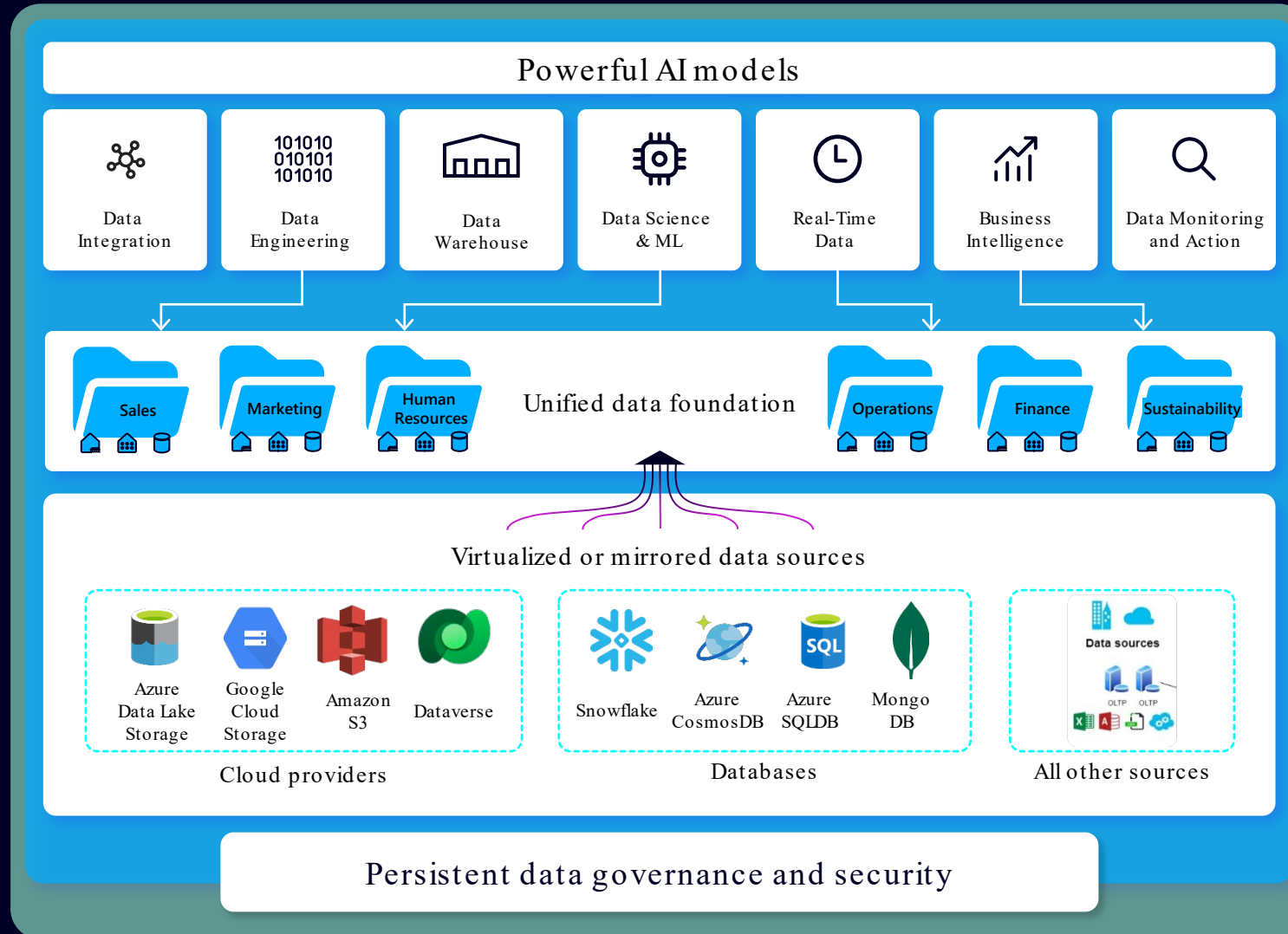
Data governance and security risks



Lagging BI and AI adoption

‘AI is only  
as good  
as the  
data it’s  
trained  
on’

# Unify Your Data Estate







# Microsoft Fabric

The unified data platform for the era of AI



**Data  
Factory**



**Analytics**



**Databases  
(Preview)**



**Real-Time  
Intelligence**



**Power BI**



**Partner  
Workloads**



**AI**



**OneLake**



**Purview**



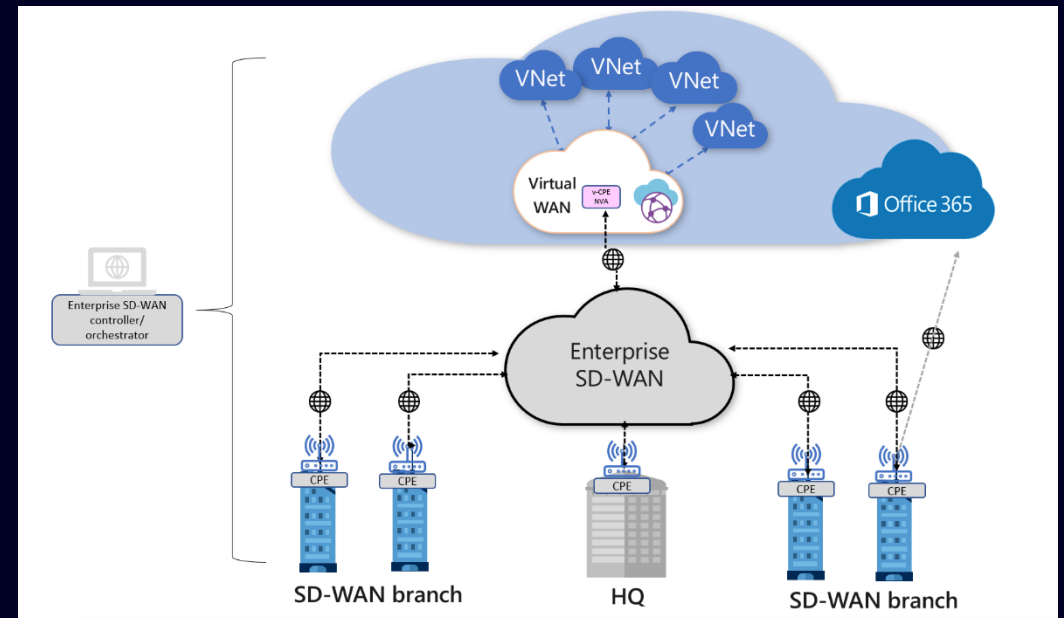
# Networking

# Network Considerations

- Azure network topology and connectivity to on-premises
- Azure network security
  - Firewall (Azure Firewall, 3<sup>rd</sup> party firewalls)
  - NSG's
  - Azure Front Door services /Application Gateway / Web Application Firewall
  - DDoS
  - Network Watcher
- Private Endpoints and Private Links.
- Azure DNS, DNS Zones, and Private DNS Resolver.

# Networking – the Rise of 3<sup>rd</sup> party NVA's

- 3<sup>rd</sup> Party Firewalls (e.g. Palo Alto NGFW)
  - Supporting centralised management of firewalls across Azure, on-premises, and other clouds
  - Can be available as a VM based appliance or PaaS service
- SD-WAN
  - Providing integration into SD-WAN (Cisco, Meraki, etc.)

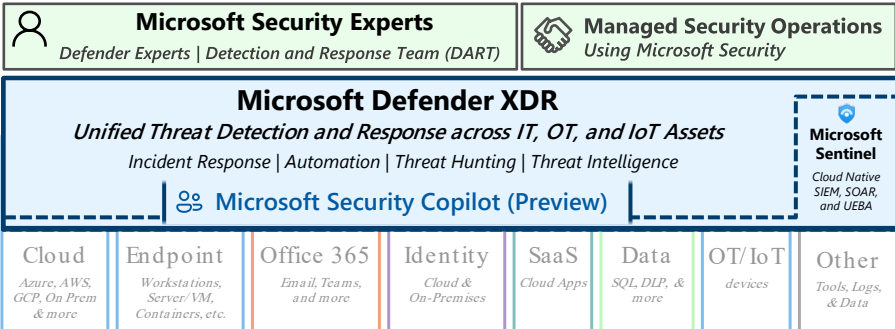




# Security and Compliance



## Security Operations / SOC

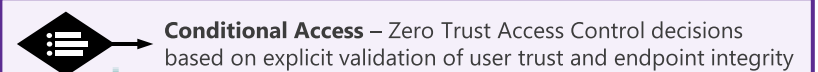
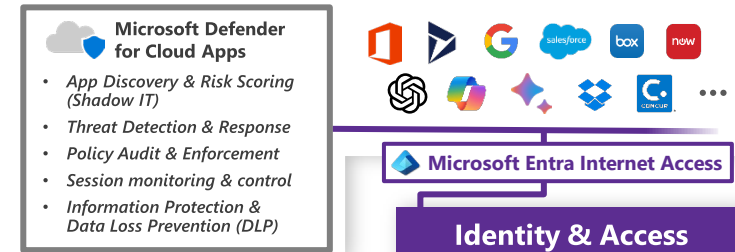


## Cybersecurity Reference Architecture

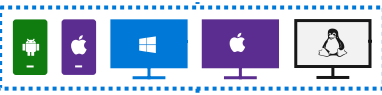
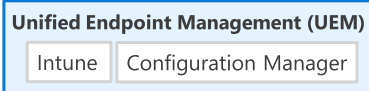
Security modernization with Zero Trust Principles

[aka.ms/MCRA](https://aka.ms/MCRA)

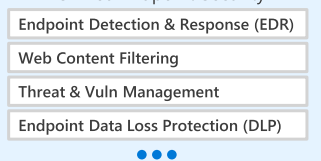
## Software as a Service (SaaS)



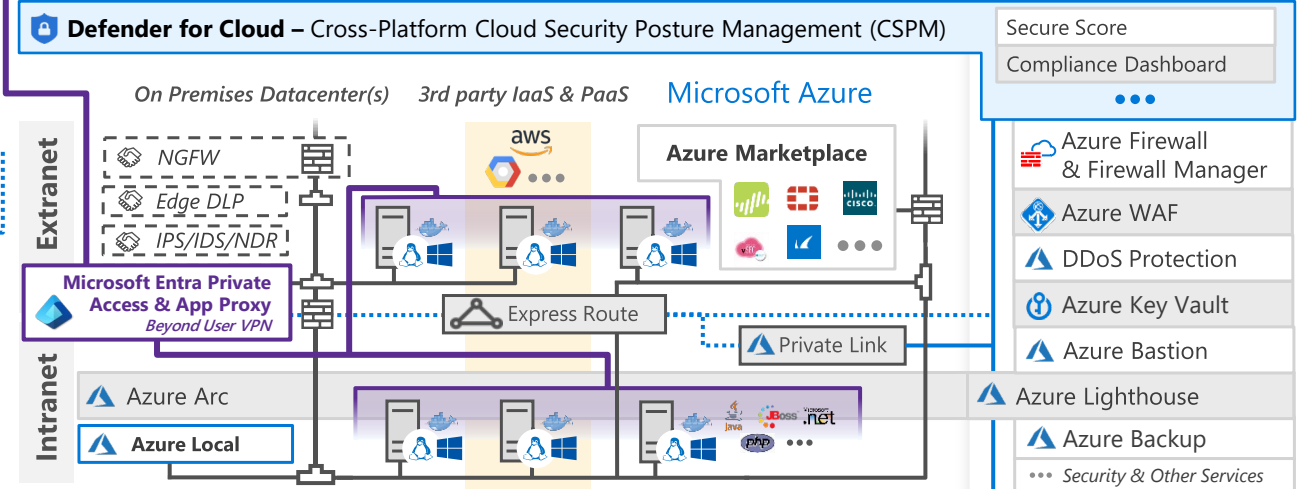
## Endpoints & Devices



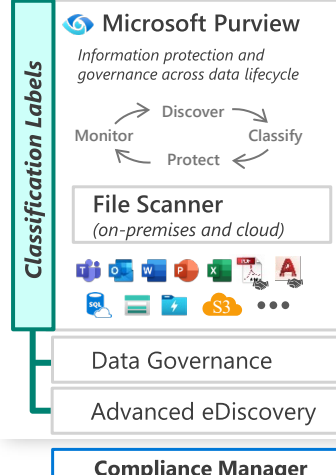
## Microsoft Defender for Endpoint



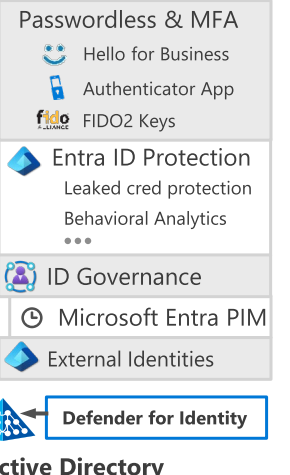
## Hybrid Infrastructure – IaaS, PaaS, On-Premises



## Information Protection



## Microsoft Entra



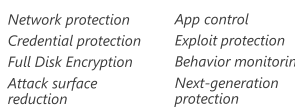
**Securing Privileged Access** – [aka.ms/SPA](https://aka.ms/SPA)

**Entra Permission Management** – Discover and Mitigate Cloud Infrastructure Permission Creep

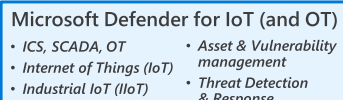
**Privileged Access Workstations (PAWs)** - Secure workstations for administrators, developers, and other sensitive users

**Security Posture Management** – Monitor and mitigate technical security risks using [Secure Score](#), [Compliance Score](#), [CSPM: Defender for Cloud](#), [Microsoft Defender External Attack Surface Management \(EASM\)](#) and [Vulnerability Management](#)

## Windows 11 & 10 Security



## IoT and Operational Technology (OT)



**Defender for Cloud** – Cross-Platform, Multi-Cloud XDR  
Detection and response capabilities for infrastructure and development across IaaS, PaaS, and on-premises



**Defender for APIs (preview)**

## People Security

**Attack Simulator**

**Insider Risk Management**

**Communication Compliance**

**GitHub Advanced Security & Azure DevOps Security**  
Secure development and software supply chain

**Threat Intelligence** – 65+ Trillion signals per day of security context

**Service Trust Portal** – How Microsoft secures cloud services

**Security Development Lifecycle (SDL)**

**JuiceIT2025**

**Data#3**

**Microsoft**

# Azure Security and Compliance

Secure Privileged Access



Entra ID | MFA | Conditional Access | Privileged Identity Management | Break Glass

Encryption and Keys



Encryption in transit / at rest, Key Management Services, Certificate Management, Audit Usage

Security Logging and Alerting



Azure Log Analytics, Sentinel, Defender for Cloud

Vulnerability Management



Azure Update Management, Vulnerability Assessment

Security Controls



Azure Policy, Microsoft Cloud Security Benchmark, Built-in compliance initiatives, Defender for Cloud

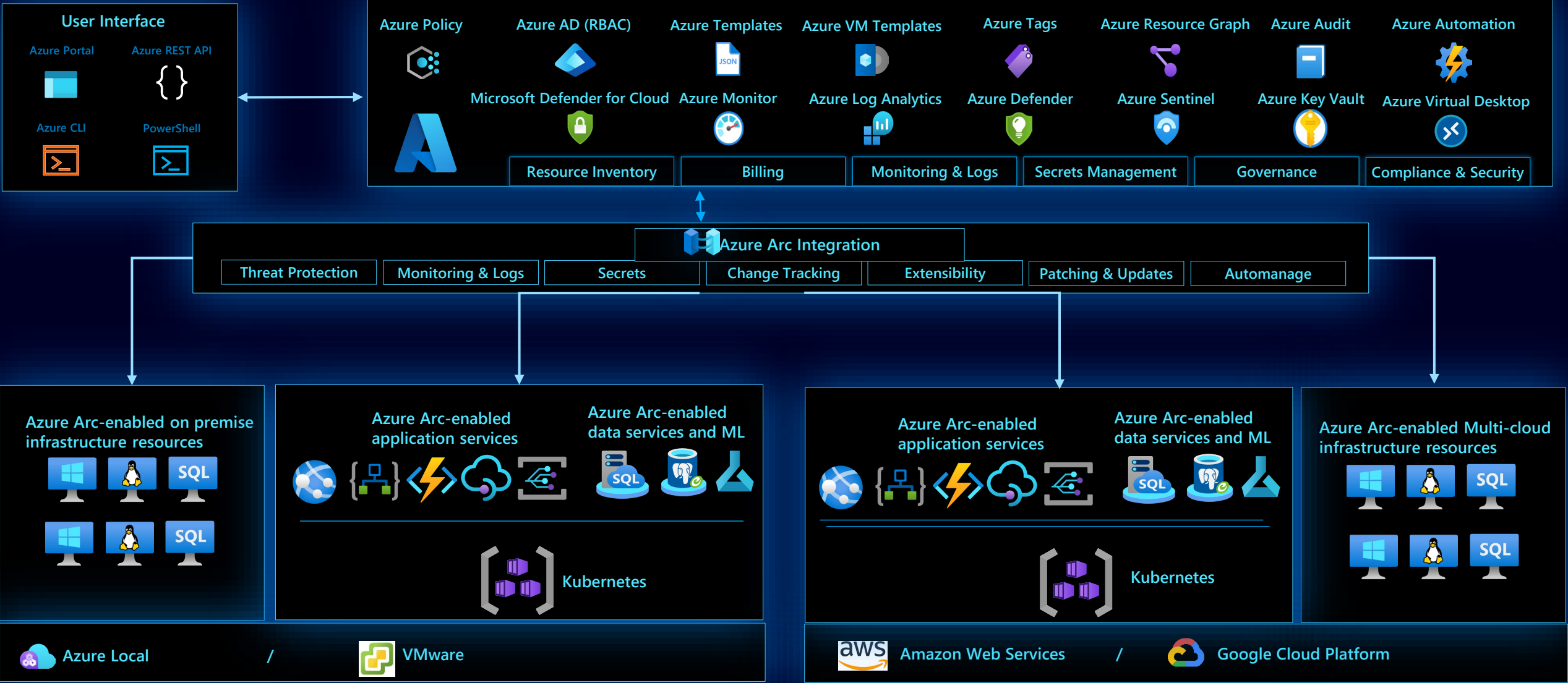
Edge and Network Security



Azure Front Door Services, App Gateway, APIM, Azure Firewall



# Management



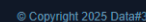
# Optimising Investments – Cost Management







# AI Applications





# Getting Started

# We're here to help:

## Azure Landing Zone:

- Cloud Strategy and Architecture
- Azure Foundation (Landing Zone) Deployment
- Azure Health and Governance Assessments

## Data:

- Enterprise Data Strategy
- Data Planning, Capability Workshops, and Roadmaps
- Data and Analytics Design, Proof-of-Value
- Data and Analytics Platform Foundations

## Security and Compliance:

- Strategy, Maturity Assessment, Data Governance, Architecture, Regulatory Compliance, Workshops
- Health Assessment
- Sentinel and Defender for Cloud Deployment
- Managed Security (Managed Firewall / Managed Sentinel / Managed XDR / SOC)

## Network

- Design and deployment of virtual network topology and configuration (incl. vWAN)
- Hybrid connectivity using ExpressRoute/SDWAN/Site-to-site VPN
- Network security (Azure Firewall/NSG's/3<sup>rd</sup> party firewalls)

## Management

- Design and deployment of management and monitoring services
- Azure Managed Services
- Azure Cost Management

## AI

- AI Planning, Use Case Workshops, Capability Roadmaps
- AI Solution Design, Proof-of-Value, Pilot
- AI Platform Foundations

# AI-Ready Infrastructure – Get ready!

Align Landing Zone  
to CAF/WAF



Azure Landing Zone

Prepare your data



Azure Fabric

Extend, segregate,  
secure your  
network



Azure Network

Review  
and co



Secu  
Con

# Data#3



[data3.com](https://data3.com)



1300 23 28 23



[Linkedin.com/company/data3](https://www.linkedin.com/company/data3)



[Twitter.com/data3limited](https://twitter.com/data3limited)



[Facebook.com/data3limited](https://www.facebook.com/data3limited)



[YouTube.com/data3limited](https://www.youtube.com/data3limited)

A low-angle photograph of a modern white building with a large glass facade. The building is set against a clear blue sky. On the upper part of the white facade, the words 'Data#3' are displayed in large, blue, three-dimensional letters. The glass windows reflect the sky and surrounding environment.

# Data#3