



Manage & Optimise Microsoft Modern Work | with Nerdio

Unified management platform for Microsoft DaaS and physical endpoints.

JuiceIT 2025

Simplify. Connect. Protect



Jarred Foley

Regional Manager – APAC

What constitutes Modern Work?

A combination of workplace solutions aimed at boosting productivity, collaboration and security.

Ensuring that individuals can work safely and effectively, whether they are in the office or remote, through a robust and user-friendly digital workspace.



What constitutes Microsoft Modern Work?

EntraID

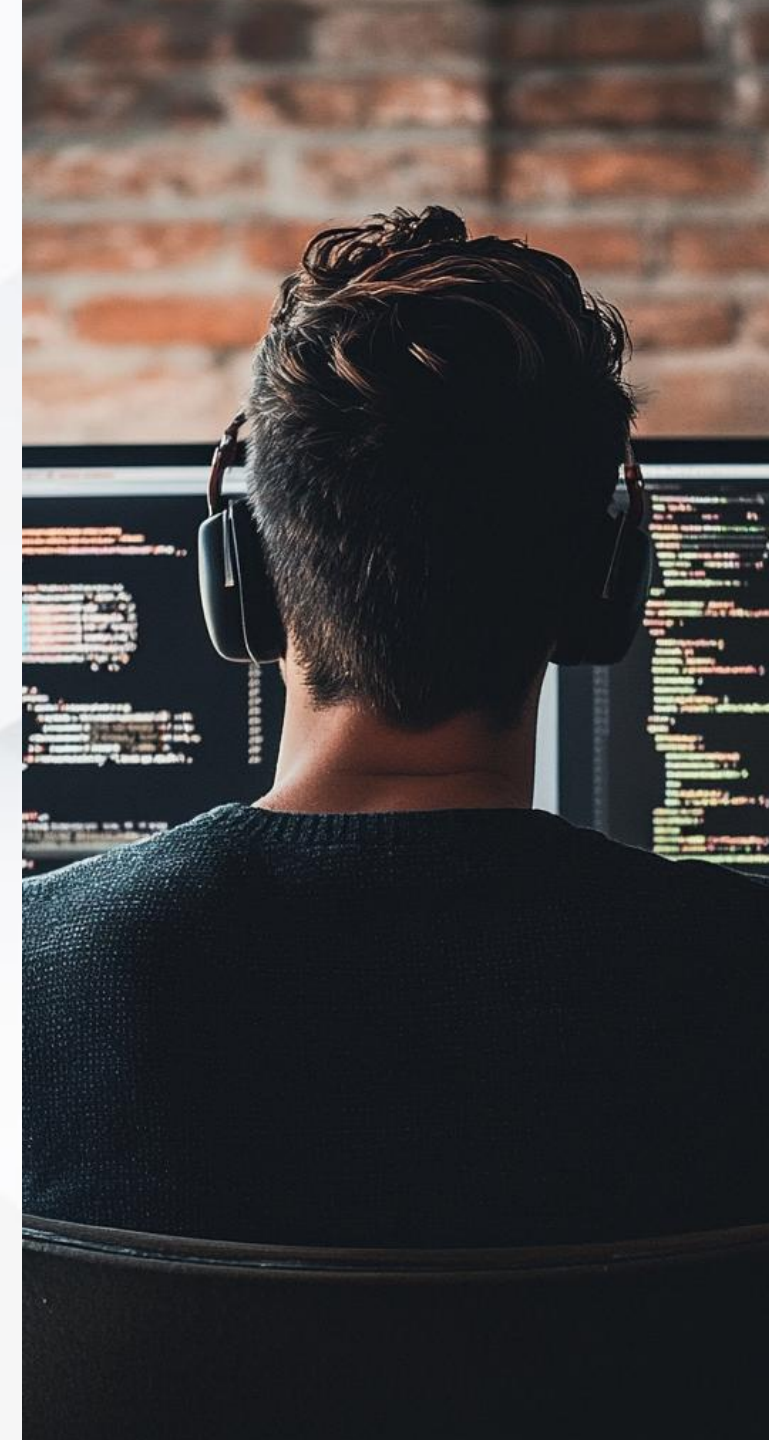
Microsoft 365

SharePoint & Teams

Intune

DaaS (VDI)

Copilot



Intune Challenges?

Intune Challenges

Initial Upskilling

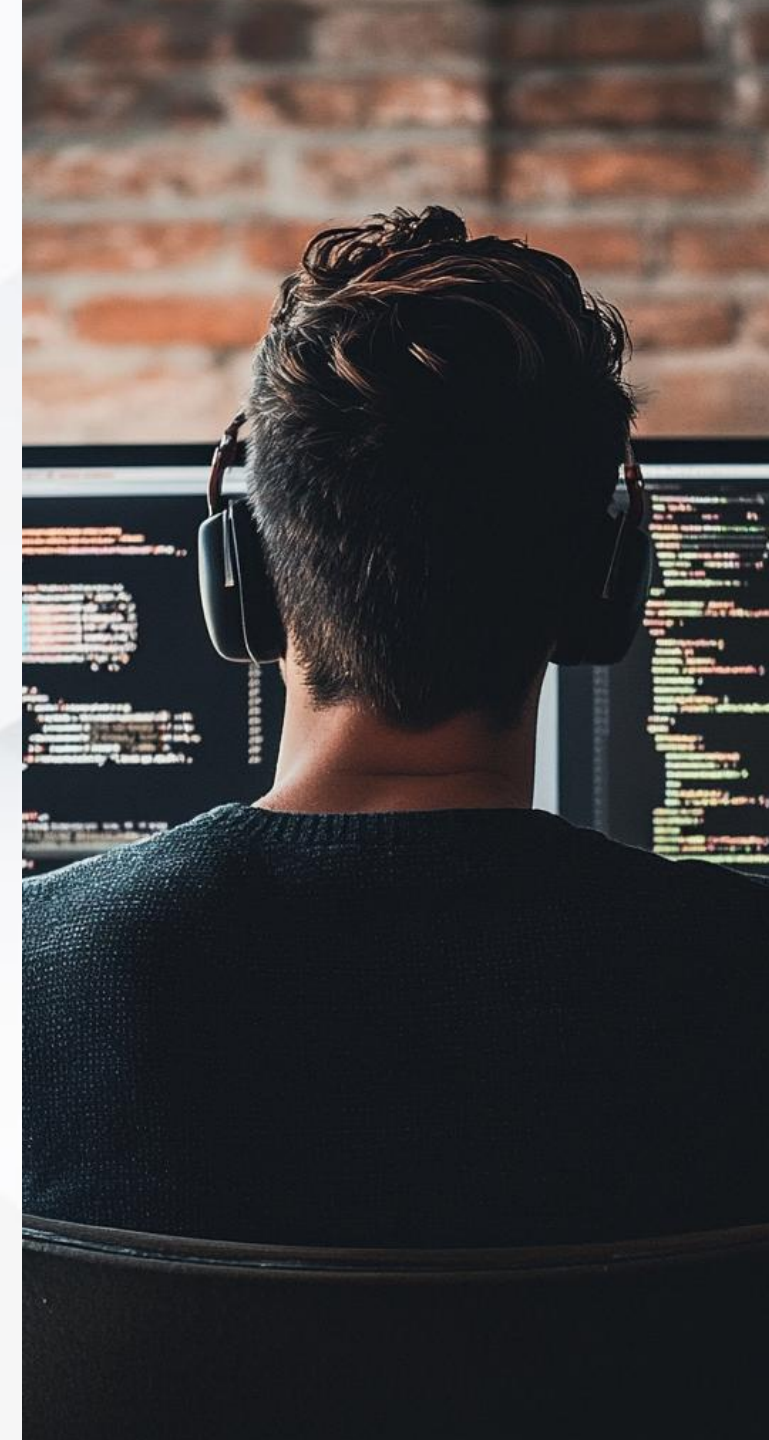
Migration / Compatibility Concerns

SOE and Application Delivery

To hybrid join or not to hybrid join

Initial Deployment | Migration

Operations and Lifecycle Management



Desktop as a Service (DaaS) aka VDI In Modern Work

DaaS in Modern Work

Use Cases

Flexible & Remote Work Styles

Temporary Workers / Contractors

Remote & Legacy Apps (Pub Apps)

Developer and HPC

Offshoring / B2B / M&A

BYO / Asset Life Extension

Privileged Access / Secure Enclave

Engineering and Geospatial

Industries

Financial Services Industry

Government & Regulated Industries

Health Care

Manufacturing & Engineering

Education

Telco & Retail



The challenges with Legacy VDI?

Business Case | Project

Hardware | Storage

Hypervisor

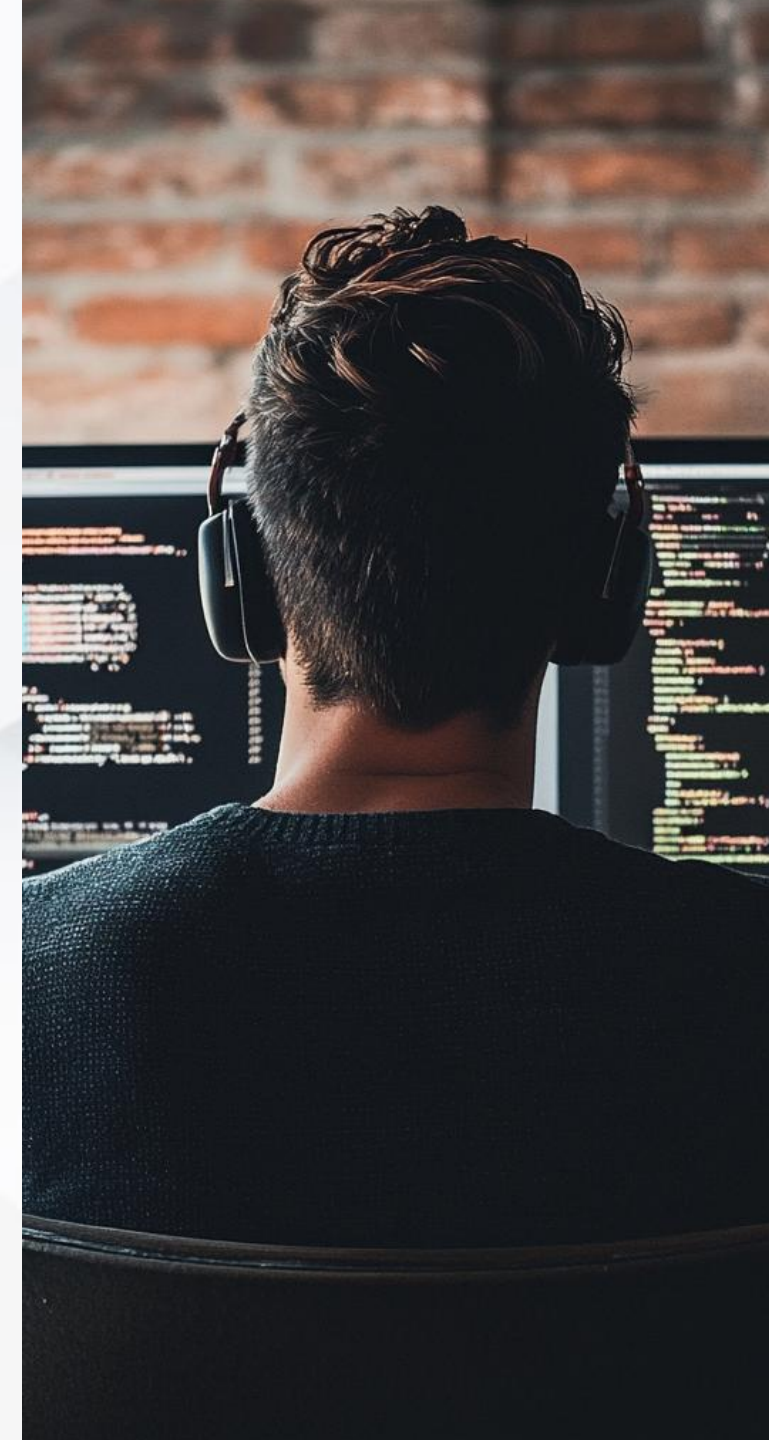
Microsoft Licenses

VDI Vendor Licenses

Assemble | Test | Configure

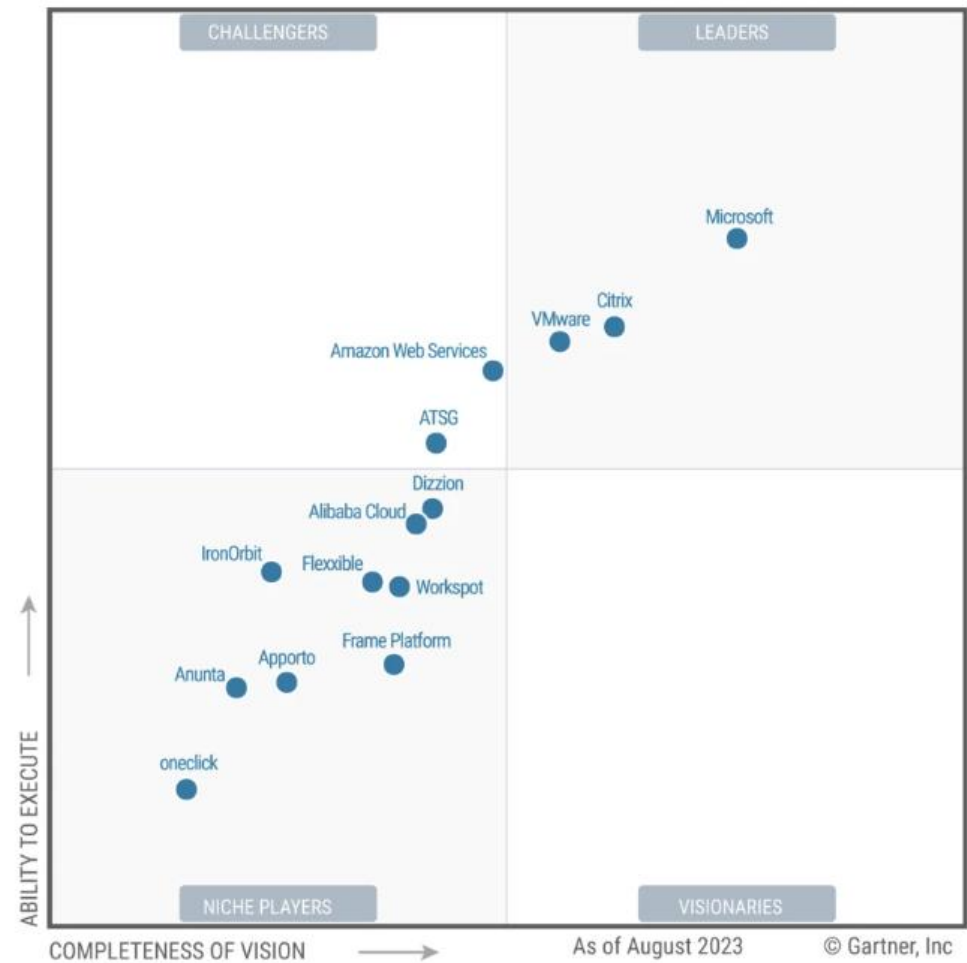
Lifecycle Manage

Inflexible | Complex | Static



Gartner Magic Quadrant for Desktop as a Service

Figure 1: Magic Quadrant for Desktop as a Service



Source: Gartner

Figure 1: Magic Quadrant for Desktop as a Service



Gartner

Microsoft DaaS solution offerings



Azure Virtual Desktop

A cloud VDI platform that delivers hosted desktops and apps with maximum flexibility and control



Windows 365

A complete SaaS solution that securely streams your personalized Windows desktop, apps, settings, and content from the Microsoft Cloud, to any device

	Azure Virtual Desktop Cloud VDI	Windows 365 Cloud PC
Optimized for	Multi-session desktop for multiple personas	Persistent desktop for multiple personas
SKU configurations	Fully customizable Licensing include in M365 E3, A3, F3 and above (and more)	2, 4, 8, 16 vCPU 4, 8, 16, 32 GB RAM 64, 128, 256, 512 GB, 1 TB storage (+ GPUs and more)
OS Support	Windows 11, Windows 10, single- or multi-session, Windows Server	Windows 11 or Windows 10
Admin role	<ul style="list-style-type: none">EUC or Infra admin	<ul style="list-style-type: none">EUC IT admin
Admin tools	<ul style="list-style-type: none">Azure PortalOr third-party management panel	<ul style="list-style-type: none">Microsoft Intune (Enterprise)Web self-service (Business)
Service	PaaS: granular controls over configuration and management	SaaS: complete end-to-end Microsoft solution
Pricing	Consumption-based	Per-user, per-month
End-user	Single or multi-user, pooled, remote app	Full Windows like-local experience



Azure Local

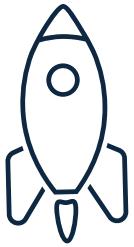


Microsoft
Intune

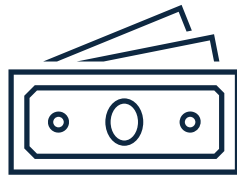


Manager
for **Enterprise**

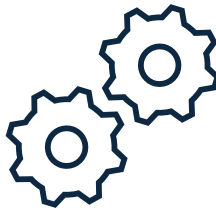
Modern, Unified Management Platform for
Taking Windows to the Cloud



**Accelerate
deployments**



**Minimize
costs**



**Reduce
complexity**



Azure Virtual
Desktop



Windows 365



Azure Local
(Stack HCI)



Microsoft
Intune

Who is **NERDIO**?



Working closely with
Microsoft Engineering
since 2018



>5 Millions of users
under management



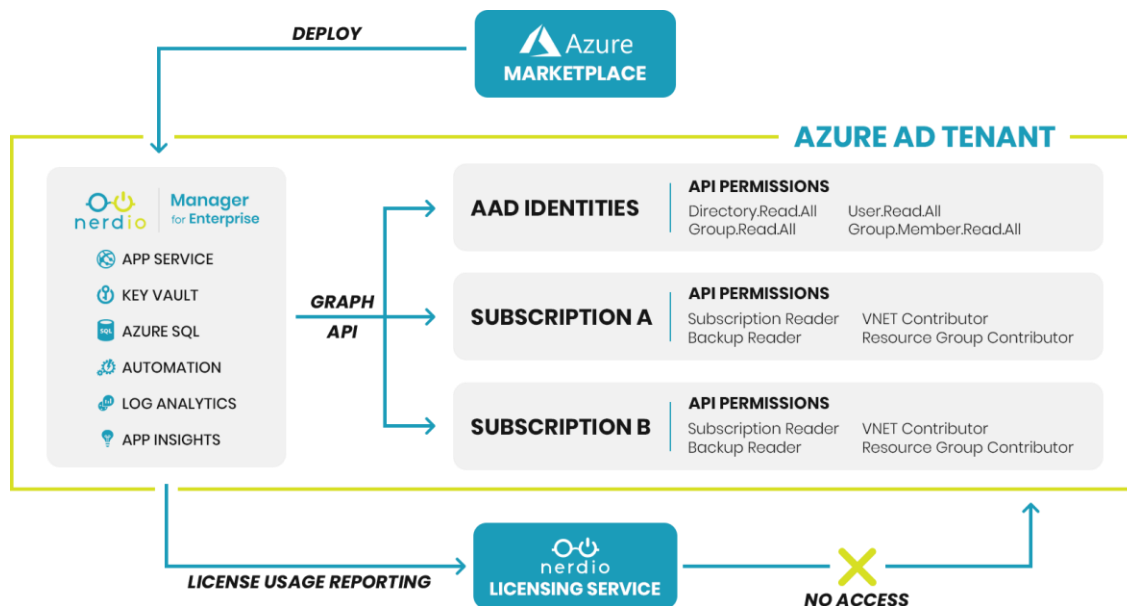
10,000+ customer
deployments since
AVD GA (October 2019)



Hundreds of new
deployments
every month

Why Nerdio?

- Accelerate the delivery & adoption
- Reduce time and effort
- De-risk migration off legacy platforms
- Measure, manage, optimise & attribute cost
- Retain native Microsoft solutions
- Augment and enhance native functionality
- Allow customers to leverage existing entitlements
- Realise the full benefits of existing investments
- Cloud Subscription-based service
- Avoid third party vendor lock-in



Regional customer base





Azure Virtual
Desktop



Windows 365



Azure Local



Microsoft
Intune

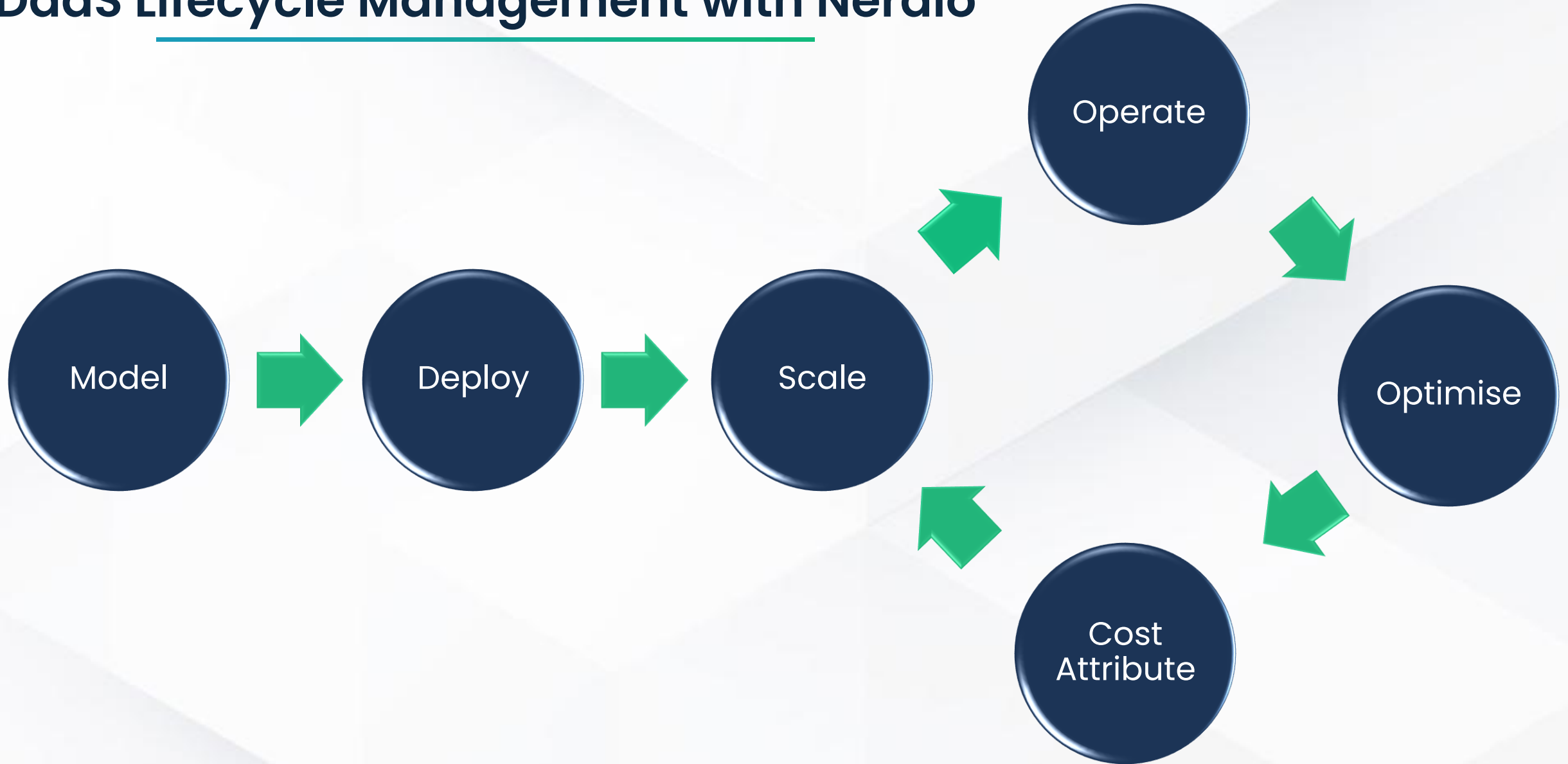
Unified Endpoint Management

Intune Management

- ✓ Simplified Interface | Dashboard | Reporting
- ✓ Granular Scoping and RBAC control
- ✓ Intune Policy Library including CIS Policies
- ✓ Automatic Policy and Assignment Backup
- ✓ Policy Versioning and Protection
- ✓ Policy Conflict Manager
- ✓ Compliance Enforcement



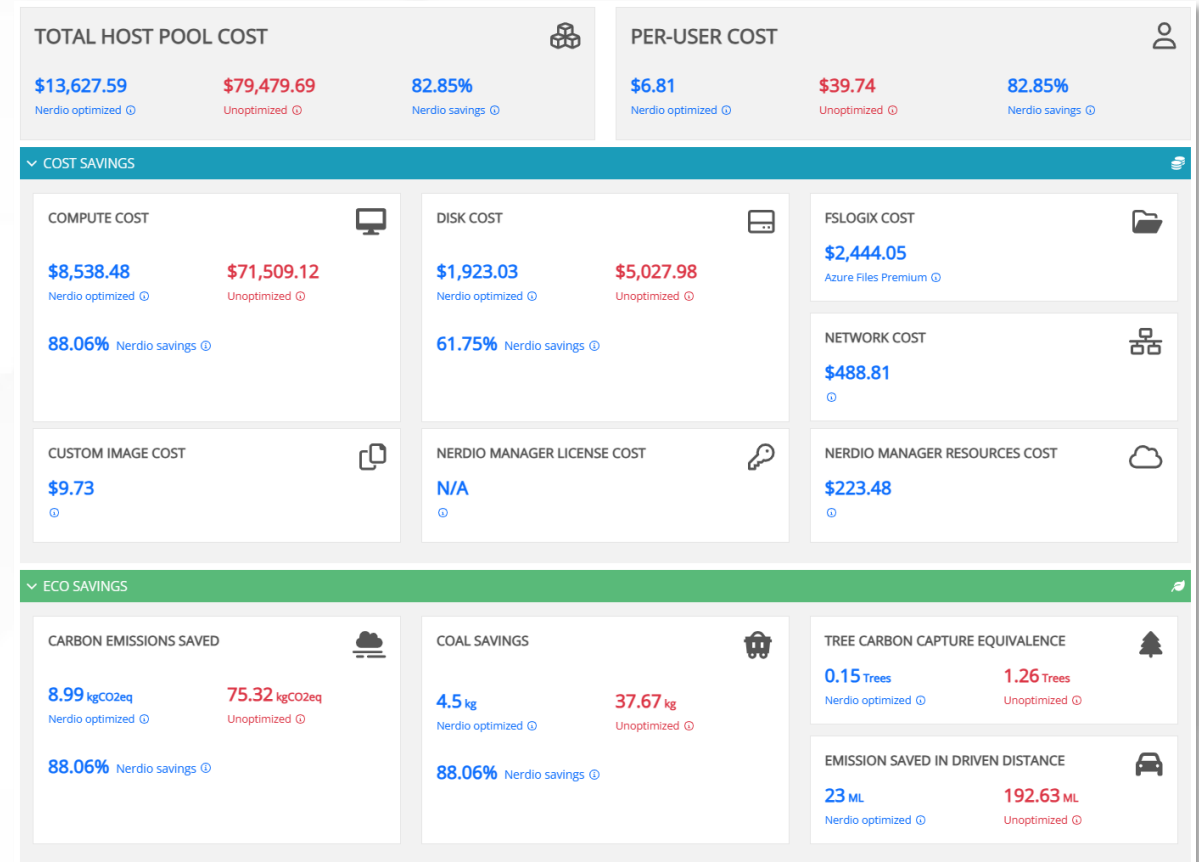
DaaS Lifecycle Management with Nerdio



Model

Nerdio Advisor: Modeler

- ✓ Eliminate the need for spreadsheets and external calculators
- ✓ Model your personas directly inside Nerdio
- ✓ Provides predictability in costs and estimated cost savings prior to deployment
- ✓ Models can be saved, cloned, exported and PDF for input into a business case
- ✓ Emissions and Eco Savings



Deploy

Image Management | Unified Applications | Scripted Actions

- ✓ Simplified Deployment
- ✓ Streamlined Image Management
- ✓ Allows for low touch through to no touch
- ✓ Integration with App Attach and App Masking
- ✓ Unified Application Management inc integration with SCCM, Intune, WinGet and more.
- ✓ Scripted Actions – GitHub and AzureDevOps

Run the following scripted actions before set as image: On

1. Update Windows 11 (individual with restart) [Nerdio]

x x v

☐ Pass AD credentials ⓘ On

Applications Management ⓘ

Applications ⓘ

1. Install Chromium [latest] (Winget Public)

2. Install Adobe Acrobat Reader DC (64-bit) [lates...]

3. Add new application...

x x x

☒ Install ☐ Uninstall

Adobe Acrobat Reader DC (64-bit) [latest] v

☐ Reboot after installation ⓘ

☒ Show favorites only ⓘ

With the schedule set to OFF action will be performed immediately. With schedule turned ON, the task will be performed according to the specified schedule.

SCHEDULE ⓘ On

START DATE: 02/16/2024 ⓘ

TIME ZONE: (UTC+10:00) Brisbane v ⓘ

START TIME: 12 a.m. v : 00 v ⓘ

REPEAT: Monthly after "Patch Tuesday" v ⓘ

DAYS AFTER: 2 ⓘ

Refresh image from Azure Marketplace ⓘ Off

All marketplace images require at least 128 GB OS disk size and current desktop image OS disk size is 64 GB

Geographic distribution & Azure compute gallery ⓘ

AZURE COMPUTE GALLERY: SE.Demo.Compute.Gallery x ⓘ

AZURE REGIONS: South Central US x Australia East x v ⓘ

Scale

AutoScale

- ✓ Intelligent AutoScaling that focuses on both compute and storage
- ✓ Adaptable Scale-out / Scale-in
- ✓ Just-in-time provisioning to further optimise resources
- ✓ File Storage AutoScale, so you are overprovisioning the amount of profile storage you need on day 1

1 HOST POOL SIZING ⓘ

Active host defined as: ⓘ

Base host pool capacity: host(s) in the pool ⓘ

Min active host capacity: host(s) in the pool ⓘ

Burst beyond base capacity: up to extra host(s) in the pool ⓘ

2 SCALING LOGIC ⓘ

☒ Use multiple auto-scale triggers (advanced) ⓘ

Start or create (scale out) in groups of up to host(s)

Stop or remove (scale in) in groups of up to host(s)

Triggers (scale out on **ANY** condition, scale in on **ALL** conditions) ⓘ

Select autoscale trigger: ⓘ

Start or create (scale out) host(s) if CPU utilization across all hosts exceeds % for minutes ⓘ

Stop or remove (scale in) host(s) if CPU utilization across all hosts drops below % for minutes ⓘ

Select autoscale trigger: ⓘ

Start or create (scale out) host(s) if average active sessions across all hosts exceeds

Stop or remove (scale in) host(s) if average active sessions across all hosts below

Scale in restrictions

Stop or remove (scale in) hosts only from: ⓘ to: ⓘ ⓘ ⓘ (UTC-06:00) (-5:00 DST) Central Time ... ⓘ ⓘ

Scale in aggressiveness: ⓘ

Deactivate (drain mode) hosts: ⓘ

AVD vs. Nerdio Auto-Scale

COMPUTE

FEATURES



Azure
Virtual Desktop



Manager
for Enterprise

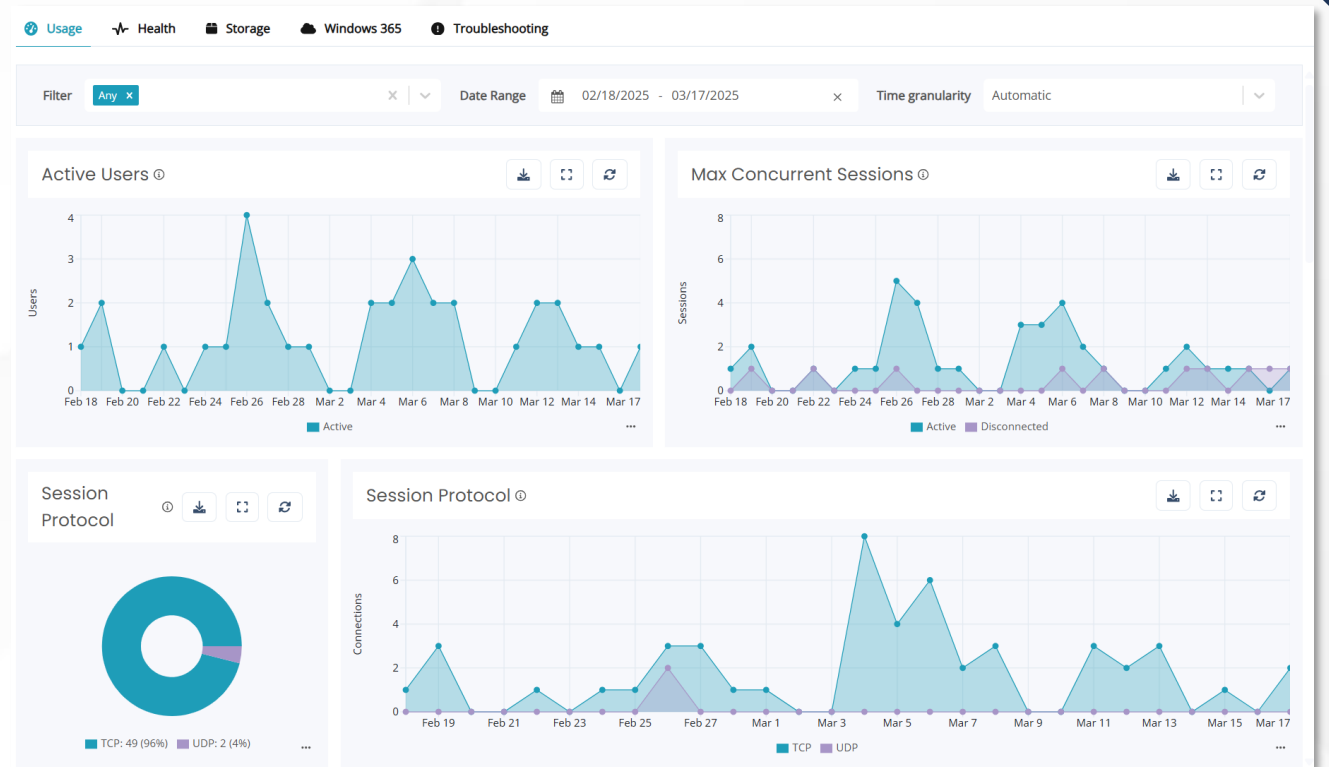
- STORAGE

Start VM on Connect	✓	✓
Pre-Stage (Ramp-Up) Hosts on a Schedule	✓	✓
Drain Under-Utilized Hosts when Scaling In	✓	✓
Scale Based on Available Sessions	✓	✓
Scale In (Ramp-Down) on a Schedule	✓	✓
Scale Personal Host Pools	✓	✓
Adjustable Scale in Aggressiveness	✓	✓
Scale in Anytime on Demand		✓
User Driven Scaling (Host Shuts Down After Last User Logs Off)		✓
Scale by Creating and Removing Hosts Just-In-Time		✓
Scale Based on Usage of CPU, RAM, and Average Active-Sessions Per Host		✓
Multi-Trigger Scaling on CPU, RAM, and Sessions		✓
Multiple Pre-Stage Schedules		✓
Automatically Re-Image Hosts on User Log Off or Schedule		✓
Auto-Heal Broken Hosts		✓
Reserved Instance Analytics for Auto-Scale		✓
Deallocate Hosts Shut Down by User		✓
Daily Schedule for Drain Mode		✓
Alternative Override Auto-Scale Schedule		✓
Deploy Alternative VM's Based on Regional Availability		✓
FSLogix Profile Compression	✓	✓
Host OS Disk Scaling (HDD When Stopped, SSD When Running)		✓
Ephemeral OS Disk Support for Host Scaling		✓
Host OS Disk Shrinking from Default 128 GB		✓
Azure Files and Azure NetApp Files Storage Scaling		✓
Storage Performance Scaling Based on Latency and Schedule		✓
Storage Size Scaling Based on Free Space		✓
Intelligent OS Disk Pre-Staging for Personal Desktops		✓
Log Analytics Workspace Storage Usage Optimization		✓

Operate

Unified Management | Auto-Heal | Self-Service

- ✓ Unified Management – everything in one place
- ✓ Analytics – Right information / right time
- ✓ Tier 0 Support Principles
- ✓ AutoHeal – don't pay for broken host
- ✓ User Self-Service
- ✓ REST API – for further integration



Optimise

VM Right Sizing | AutoScale Optimisation

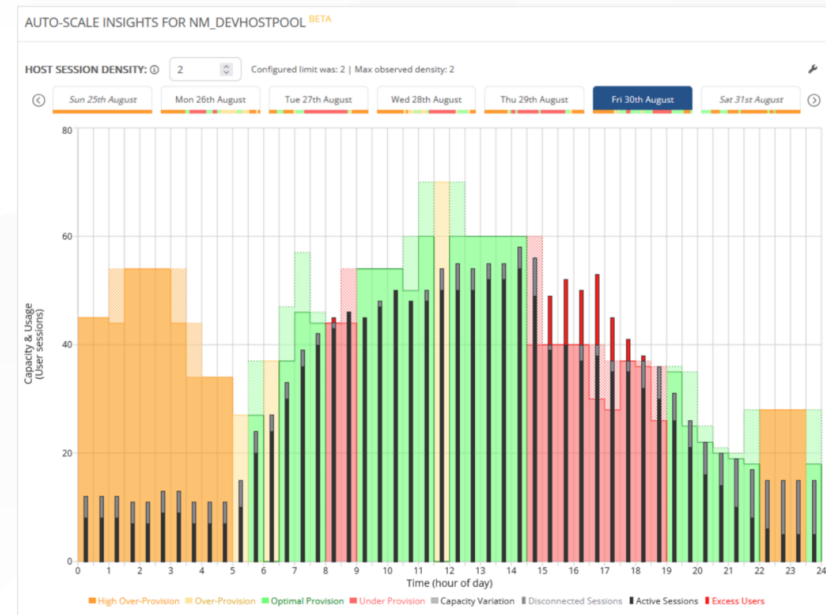
- ✓ VM Right Sizing Service which helps identify overprovisioning or bottlenecks

- ✓ AutoScale Insight with AI Optimisation

- ✓ Reserve Instance Analytics

- ✓ Log Analytics Cost Optimisation

NAME	VM	PROVISIONED	ASSIGNED USER	LAST USER LOGIN	
10.1.254.41 (NWM-Demo-Vnet/NWM/northcentralus/AN)	VM size: D4s_v5 (4C & 16GB) OS disk: 128 GB (P10/Premium SSD) Resource group: NWM-DEMO There are 3 recommendations	Aug 29, 2023 04:20 AM (Windows 10 (22H2) Enterprise)	@getnerdio.com Available (AVD agent: v1.0.7539.5800, SxS agent: rdp- sxs230920088) View VM performance	Last user: @getnerdio.com Sep 7, 2023 04:46 AM more...	Power off



NIGHT AND EARLY MORNING (12:00 AM - 06:00 AM)

- Issue: Over-provisioning (High Impact)
- Recommendation:
 - Deactivate (drain mode) hosts: Switch from "All but Minimum active capacity" to "No" during this time range.
 - Rolling Drain Mode: Enable with settings:
 - Start time: 12:00am
 - % hosts in drain mode: 100%
 - Load balancing: Depth First

LATE MORNING (11:30 AM - 12:00 PM)

- Issue: Over-provisioning (High Impact)
- Recommendation:
 - Scale in restrictions: Reduce the minimum active capacity during this time. Set a batch size of 2 hosts for scaling in.
 - Rolling Drain Mode: Enable with settings:
 - Start time: 11:30am
 - % hosts in drain mode: 50%
 - Load balancing: Depth First

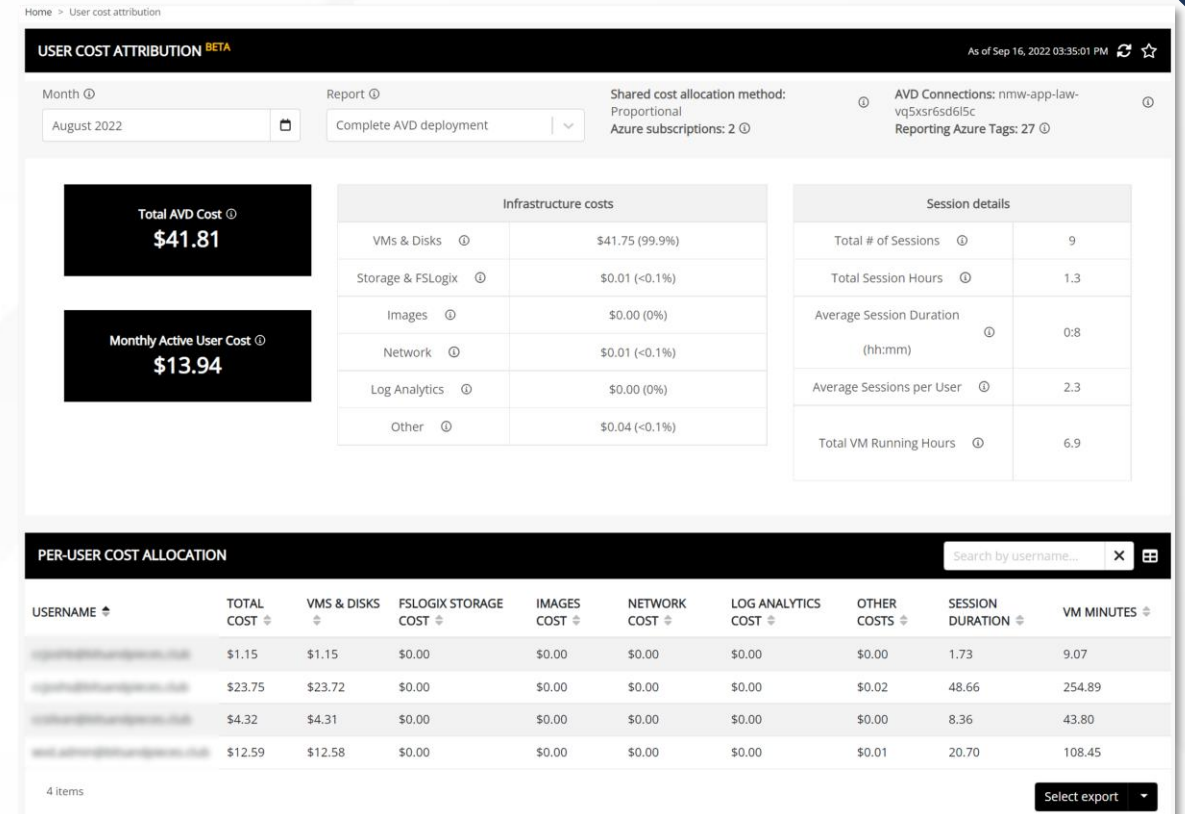
SUMMARY RECOMMENDATIONS:

- Adjust Deactivate (drain mode) hosts during "Night and Early Morning" to "No" to prevent unnecessary over-provisioning when user demand is low.
- Enable Rolling Drain Mode during "Night and Early Morning" and "Late Morning" to effectively decrease over-provisioning.
- Reduce Minimum active capacity and introduce batch size for scaling in during "Late Morning" to balance the infrastructure with actual demand.

Cost Attribute

User Cost Attribution

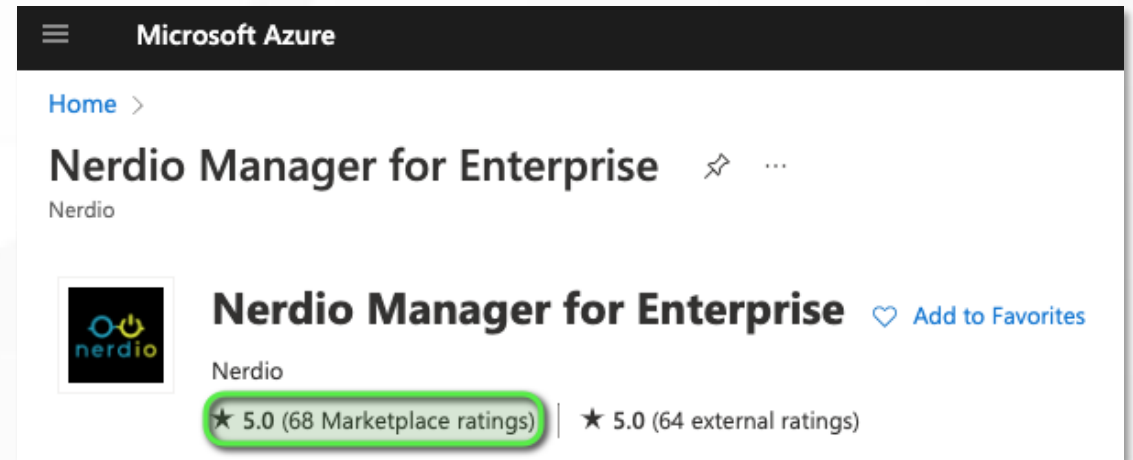
- ✓ Precise per-user cost attribution towards the total cost of an AVD (compute, storage, network, PaaS, SaaS) based on the duration of an individual's usage of AVD.
- ✓ Can be used for visibility, cost optimisation, show back and chargeback.
- ✓ PowerBI connector is available for customers seeking to perform custom reporting and integration of data sets such as Department, Cost Centre or Application Owner.
- ✓ Template dashboards are supplied so that customers are able to tailor to suit their requirements.



What Nerdio Customers Say

Customer Quotes

- *"I have no idea how an enterprise could manage a medium or large scale AVD deployment without Nerdio Manager for Enterprise."*
- *"Nerdio is an essential enterprise orchestration tool for AVD that pays for itself!"*
- *"If you have AVD its almost a no brainer, you should have Nerdio."*
- *"Managing AVD was burning me out, until we got Nerdio."*
- *"There are so many intelligent, cost-saving management features crammed into a single console. Nerdio Manager is the only way to efficiently manage an AVD environment at scale."*





NerdioCon

2025
PALM SPRINGS

On Tour!
In early June 2025

[NerdioCon.com](https://nerdiocon.com)





Want to know more? Come see us at our booth!

salesAPAC@getnerdio.com



Jarred Foley
Regional Manager



Josh Goldman
Corporate Sales



Gill Su
Sales Development



Michael Halvatzis
Sales Engineer



Rod O'Rourke
Partner Manager