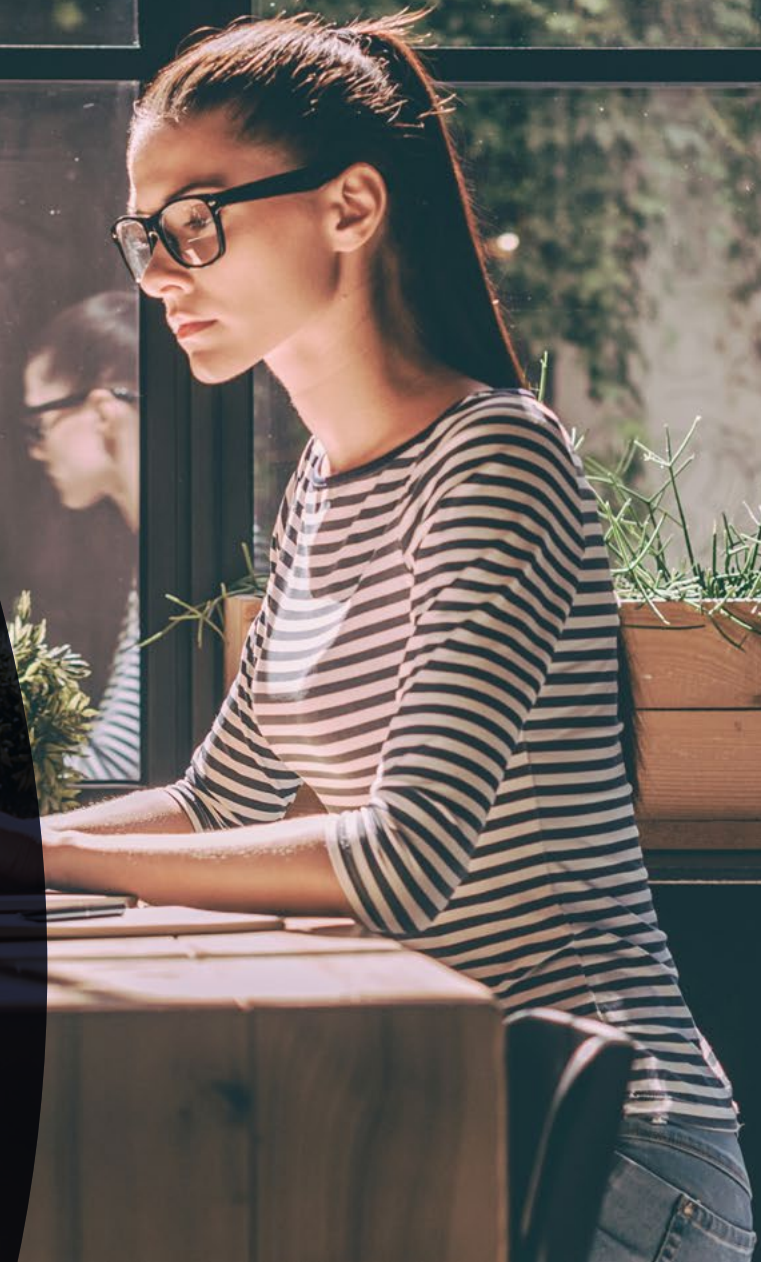


Data#3



Building your remote working model: office not required

Create a culture where collaboration and communication rule, and employees have access to technologies that empower them to do their best work.



Introduction

We have been standing on the precipice of significant technological change for many years now. Today, the invisible line has been crossed, putting us in the midst of the much-touted fourth industrial revolution – and it is rapidly transforming the way we live, work and relate to one another. Behind the big heroes of this era - AI, automation, VR and IoT – hides a powerful player, quietly revolutionising the workplace and unleashing innovations. Welcome to workplace collaboration technologies.

In the fourth industrial revolution, organisations have access to sophisticated tools to better support employees to collaborate, communicate and connect with each other. Devices and apps are simplifying the user experience and promoting new levels of workforce mobility and productivity. Despite the many cybersecurity challenges that come with these new dynamic workplaces, unparalleled security measures are evolving to protect enterprise data and intellectual property. When done right, these technologies support engaged employees who have the tools to excel within this era of flexibility, actively contributing to the overall success of the modern organisation.

Yet, this vision is only put into actuality by a select few forward-thinking organisations. Some organisations may invest in a handful of tools, leveraged through specific tasks; others have a myriad of siloed capabilities, but haven't tapped into their true value. Others lag with outdated legacy systems while the world digitally transforms around them, leaving them behind.

In this eBook we explore the modern workplace.

A place where collaboration and communication rule, and employees have access to technologies that support them to do their best work – as individuals and as teams. We introduce the evolving Microsoft ecosystem, sharing how its capabilities can create revitalised organisations where creativity is limitless and organisational transformation can deliver healthy bottom line results for your business.

Contents

Teach me how and where we work is changing, driven by technological innovation and evolving user habits	3
Help me understand the building blocks required to establish a framework for the modern workplace	10
Show me why establishing a sound corporate governance strategy is as critical as the applications and devices I choose to deploy	16
Help me embrace digital transformation to experience the power of collaboration in the cloud	18
Show me the next steps I can take for new thinking	20
Help me extend my understanding of Microsoft for the enterprise	21

The modern workplace

Work is what you do, not a place you go

Technology advances, the changing face of corporate culture and new generations entering the workforce – these are the forces changing and challenging the way the modern workplace works. Diverse and dynamic workstyles are replacing repetitive tasks. Projects are completed by small agile teams sharing ideas and tasks. Employee engagement and satisfaction has become critical to motivating staff productivity and their retention. 87% of employees expect their employer to support them in balancing work and personal commitments¹. As a result, flexible working arrangements are now the norm, with employees working from a mix of in office and remote locations.

When it comes to fostering a modern workplace there is no one size fits all. It's all about what works for the business as a whole. To support these increasingly necessary workstyles, each organisation must take a coordinated approach to aligning people, processes and technology. It is only then that an organisation can truly reap the benefits of seamless collaboration and productivity - the hallmarks of today's modern workplace.

The modern workplace for individuals and teams

Today's workplace sees 80% of workers' time spent on activities such as meetings, calls and responding to emails – leaving little time for the critical work they must complete on their own². Whilst much of this is deemed collaborative, it's not always productive. The last two decades have seen teamwork increase by up to 50%³ and the business results support organisations that promote collaborative working are 5 times as likely to be high performing, with highly engaged teams returning a 21% increase in profit⁴.

We also see that the experience for remote staff in these meetings isn't usually inclusive – more often than not they're dialled into a meeting on mute, with their video turned off, usually attending to email. It's a poor user experience and not the most productive use of time.

Ultimately, what is clear is that providing tools that promote teamwork and collaboration will create an environment where your people – your biggest investment – are empowered to do their best work, irrespective of where they are.

When employees collaborate, they work on average 15% faster,

73% DO BETTER WORK,

60% are innovative and 56% are more satisfied⁵.

Bringing out the best in individuals and teams



Expectations

Today's workers have certain expectations around the technologies made available to them. Failing to meet these expectations makes an organisation less attractive to new recruits - and particularly the new generation of digital natives who have grown up surrounded by technology. However, across the board 26% of professionals say that poor workplace technology would likely make them quit their job⁶.



Remote communications

Work is no longer a 9 to 5 scenario. Employees expect the choice and flexibility to work around their personal lives. Modern technologies have the ability to facilitate secure collaboration beyond geographies and other barriers that may hold teams back from achieving their best work.



Quality

Workplace collaboration improves the quality of work and promotes ingenuity and innovative thinking. By harnessing the collective knowledge and expertise of teams you gain deeper insights that can inform decisions and guide actions, speeding up the innovation process.



Efficiency

Collaborative technology keeps a diverse team of workers happy and productive, while adapting to, and supporting, each individuals' workstyles. This increases employee engagement, motivation and creates cohesive, efficient teams.



Community

Avoid the friction of lost passwords, multiple logins and jumping between apps. By providing secure, seamless, and connected experiences teams can maximise productivity and efficiencies, while creating a strong sense of community.



Frontline workers

As the first point of customer contact, these are the employees who have a lot of the first-hand knowledge of customers. Armed with the right technologies to support knowledge sharing these employees can bring deeper insights into the wider organisation.



Millennials

The fastest growing group entering the workforce, Millennials are the first digital-native generation. They are all about connections, collaboration and flexibility, and have expectations around the types of technology available to support them in their jobs.

Creating the modern workplace with Microsoft

Where once Microsoft products could be purchased individually, changes to their licensing model means they now come bundled together. Office 365 E3 or E5 now come as complete solutions - allowing you to unlock even more value from your Microsoft products. Understanding how each product works independently, and as a whole, will ensure you tap into their full power.

Devices

The Microsoft Surface family is designed to support the diverse ways we now work. Surface laptops that enable seamless remote collaboration and the new Surface Hub 2S connects in-office and remote employees for connected collaboration – these are devices designed to deliver the modern workplace.

Productivity

Boost personal productivity and unlock more value with the familiar and trusted Office 365 apps – such as Word, Excel, OneDrive and SharePoint – as well as the broader Office 365 product family – Microsoft Whiteboard, Yammer and PowerApps. You can support individuals to work together securely on almost any project, from anywhere in the world on any device.

Management

Simplify modern workplace management with management tools from Microsoft. Intune will help ensure all your company-owned and BYO devices are managed, protected and up-to-date. Windows Autopilot revolutionises the way new devices get deployed, reset and repurposed, with a zero-touch IT experience.

Security

Defend against the most sophisticated attacks with Microsoft Enterprise Mobility + Security. Recognised by Gartner as a leader in endpoint protection⁷, Microsoft's powerful collection of security tools allows you to proactively protect, detect and respond to evolving threats before they become a bigger problem.

Collaboration

Transform workplace collaboration with Microsoft Teams, offering one central secure hub for meetings, chat and content. Or use SharePoint to share and manage content, knowledge and applications, while enabling teams to quickly find information and seamlessly collaborate.

Employee engagement and empowerment

Improve engagement and communication in your organisation with Yammer. You can easily build communities, gather ideas and feedback, and keep everyone informed and aligned. Or keep teams in sync with the power of content sharing through SharePoint.

Digital transformation

Organisations of all sizes are content-creating machines. Microsoft's Enterprise Content Management (ECM) solution allows you to organise and manage your content throughout its lifecycle, helping your team to function more efficiently.



The Microsoft ecosystem

Made for the modern workplace

Security

The Microsoft Enterprise Mobility + Security identity-driven platform (within Microsoft 365) helps secure your organisation with products that offer greater protection, detection and response capabilities for your mobile workforce.

- Windows Defender Advanced Threat Protection
- Microsoft Intelligent Security Graph
- Azure Advanced Threat Protection
- Device Guard
- Windows Trusted Boot
- BitLocker and Microsoft BitLocker
- Administration and Monitoring (MBAM)
- Office 365 ProPlus Data Loss Prevention
- Azure Information Protection
- Multi-factor Authentication

Governance

Align key business processes, organisational structure, compliance concerns, roles and responsibilities, permissions and security and develop a plan to get the most from your Microsoft investment.

- Governance Policy
- Information Security
- Information Architecture
- Organisational Change Management
- User Adoption Training
- Implementation Planning
- Risk Management Strategy
- Solution Architecture

Applications

With collaboration and security at their core, Microsoft's evolving suite of applications – led by Windows 10 and Microsoft Teams – are made for getting things done.

Windows

- Intelligent, built-in security
- Simplified deployment and updates
- More control for management
- Comprehensive device management

Microsoft Teams

- Communicate via chat, online meetings, calling and web conferencing
- Collaborate on files in Office 365
- Integrate with Microsoft apps and third-party services
- End-to-end security, administrative control and compliance

Devices

Purposefully designed for the evolving ways people work, the Surface family from Microsoft is mobile, powerful and ultra-versatile.

- Surface Pro 7
- Surface Pro X
- Surface Laptop 3
- Surface Go
- Surface Studio 2
- Surface Hub 2
- Surface Book 2

Technology choices in the modern workplace

When it comes to overall business success, 62% of CIOs consider communication and collaboration critical⁸. The key outcomes they are looking to achieve include:

- improving operational efficiency (44%),
- boosting employee productivity and collaboration (39%), and
- increasing customer or client satisfaction (30%)⁹.

In order to create a modern workplace, organisations must match employees' expectations for communication and collaboration needs with the right technology choices that are both secure and easy to use - for end users and IT alike.

For IT teams, these technologies must enable them to stay in control of IT across all environments and platforms – and ensure that shadow data and IT is phased out. This means having access to tools that provide proactive insights into systems, intelligent security and threat protection, identity and access management at-scale, easy deployment and simple management.

97%

of all attacks are automatically remediated on endpoints, leveraging the power of AI within Microsoft 365 E5¹⁰.

Employees who use social messaging tools internally can see as much as a 35% reduction in time spent searching for company information¹¹.

Secure collaboration tools for stronger, resilient organisations



Recruitment and retention

Technology can support the recruitment of top talent in this incredibly competitive labour market. For example, 85% of Australian businesses are using flexible working to improve talent retention¹². Then there's the newer generation of workers - Deloitte found that 16.8% of millennials gauge job opportunities according to how good work life balance is. In short, by responding to the needs of a tech-savvy workforce, they'll respond with loyalty.



Employee-first

The modern workplace is increasingly employee-centric. By providing collaboration tools that cater to many different personalities, skill sets and needs, an organisation can offer a personalised and decentralised workplace where everyone can work together - in a way that suits their workstyles.



Intelligence

With more timely access to information and data across multiple repositories, teams and managers will be empowered to make faster, better decisions. This also results in a reduction in the time it takes to make decisions, leading to increased worker productivity.



Secure

Microsoft products, such as Microsoft 365, includes threat protection and intelligence tools to protect, detect, and respond to cyberattacks. By leveraging technology that looks after itself, IT can trust their cloud infrastructure to be always up-to-date as it delivers the latest features and security automatically, reducing the burden of management and supporting IT to become more impactful.



Control

One of the reasons that shadow data and IT arose was because companies had poor collaboration solutions, so employees adopted their own cloud-based solutions. Today, Microsoft tools bring data back into corporate control by delivering solutions with user experience at their core. When deployed in conjunction with a sound corporate governance strategy - which dictates compliance requirements, roles, responsibilities, permissions and security, all aligned to key business processes - an organisation's risk and exposure is significantly reduced. For example, it's no longer necessary for employees to covertly use file sharing sites - such as Dropbox - in order to circumvent storage limits.



Risk management

Microsoft collaboration tools offer breakthrough insights into risk and operational models with advanced analytics solutions. They can act on real-time intelligence to optimise risk management, meet regulatory requirements, assess compliance posture and reduce risk with built-in compliance solutions.



Reduced total cost of ownership (TCO)

Infrastructure savings represent one of the highest ways to achieve return on investment (ROI). With legacy infrastructure straining IT budgets with high maintenance costs, a move to the cloud makes good fiscal sense. Cloud-based solutions reduce the need for purchases, installation, and maintenance of infrastructure while also improving uptime, disaster recovery capabilities and IT security.

The elements of the modern workplace

- Realise the power of creativity and collaboration with Microsoft 365
- Ultimate protection, detection and response capabilities with Microsoft Enterprise Mobility + Security
- Engage and empower people to do their best work with Windows 10
- Communicate and collaborate like never before with Microsoft Teams
- Unleash mobility and productivity with Microsoft Surface

Powering productivity with Microsoft 365

Microsoft 365 is designed to help organisations realise the power of creativity and collaboration in the enterprise. It brings together Office 365's familiar tools including Word, Excel and PowerPoint, with Windows 10 and Enterprise Mobility + Security. Together this solution delivers a complete, intelligent and secure platform that empowers people – wherever they are, however they choose to work.

Discover how Victoria's Office of Public Prosecutions modernised their working environment and boosted productivity by migrating to Office 365.

Microsoft 365 for users and teams

Team collaboration

Co-author documents in Word, Excel, PowerPoint or OneNote in real-time, and share feedback via Word chat. Version control is easier to manage as changes are automatically saved.

Secure file sharing

Share files safely with others and protect your data with secure links to control access and editing permissions.

Mobility

Office 365 apps are designed for workflow portability - teams can create, and collaborate/communicate on, documents using a desktop or mobile device.

Device compatibility

Windows 10 features built-in compatibility that helps you easily transition from working at your office desktop to your mobile device.

Machine learning-enabled efficiencies

Get formatting and design suggestions in PowerPoint, or data insights in Excel. Calendaring also becomes easier, with seamless machine learning that suggests meeting times and follow-ups.

Communication

Share insights instantly, find/add contacts and share files to collaborate on wherever you go.

Microsoft 365 for organisations and technology

Device and user security

Enterprise Mobility + Security manages your mobile devices, app security and user access/management, plus it analyses and protects against outside threats.

Data security

Microsoft 365 apps have built-in advanced threat protection for your data. Advanced algorithms, supplemented by constant human input, work to improve how threats are detected and defeated.

Threat protection

Enterprise Mobility + Security uses machine learning and user behavioural analytics to evaluate and guard against outside cyberthreats. It will continuously monitor the network and endpoints with up-to-date intelligence on known attacks and exploits providing advanced threat protection

Compliance

Safeguard data and fully comply with the Notifiable Data Breaches Scheme and other global, regional and industry-specific regulations.

Risk management

Compliance Manager and Content Search can help companies assess and manage risk, while Advanced Data Governance and Data Loss Prevention help classify, protect and monitor company data.

Protect, Detect and Respond with Microsoft Enterprise Mobility + Security

Don't let cyberthreats hold back your organisation from experiencing the power of the modern workplace. With Microsoft Enterprise Mobility + Security (EMS) – a core component of Microsoft – you get greater protection, detection and response capabilities for your mobile workforce. EMS and its family of products is designed to increase the security features of Windows 10 and Office 365, extending them across your entire environment including third-party technologies.

EMS for users and teams

Secure authentication

Users can trust in the reduced risk of security breaches without the need for a password. Simply switch on one of the many multi-factor authentication options to protect your users from 99.99% of identity attacks.

Enable secure productivity

Secure access to SharePoint Online and Exchange Online, plus leverage Microsoft Cloud App Security for productivity without the worry of shadow data and IT.

Simplify user adoption

Effective controls that are simple to use and embedded directly within the native tools people use every day ensures more users adopt new security measures, greatly minimising exposure.

EMS for organisations and technology

Identity and access management

Increase your security and productivity with a single, holistic identity solution that secures connections between people, devices, apps and data.

Information protection

Gain visibility and control over how any file is being used with a comprehensive and integrated information protection solution.

Threat protection

Detect and investigate advanced threats, compromised identities, and malicious actions across your on-premises and cloud environments.

Unified endpoint management

Flexible management and powerful security solutions let you deliver protected mobile experiences on any device.

Cloud access security broker

Gain visibility into your cloud apps and services, build insights with sophisticated analytics, and control how your data travels so you can respond to and combat cyberthreats.

Security, durability and great design with **Windows 10**

For organisations looking to reinvent themselves and create a modern workplace that engages and empowers people to do their best work, Windows 10 is a game-changer for securing the organisation throughout that journey. By protecting user identities, devices and information with a comprehensive solution driven by intelligence, your path to modernisation can continue without interruption.

According to a recent Forrester study, Windows Defender Advanced Threat Protection – now integrated with Windows 10 – contributed to a 40% reduction in risk of a data breach and caught 1.7 times as many threats as other endpoint detection and response tools¹³.

Discover how Melbourne City Mission turned to modern management to better integrate the business and provide tools to give students the best future prospects.

[Read customer story](#)



Windows 10 for users and teams

Business-ready devices

Because it is faster and easier for IT professionals to deploy, end users have their device (including all applications) ready to go on their first day.

Easy search and find

Users can find what they need faster – apps, settings, documents, emails and more, as everything is connected and seamlessly integrated across the Microsoft ecosystem.

User experience

Features like the [new clipboard experience](#) or [Windows Timeline](#) make it easier than ever to work across Windows devices.

Productivity

Microsoft Edge is designed for Windows 10 to offer users faster, safer ways to get work done across their PC and phone. Built-in tools make it easy to keep tabs organised, write on web pages, or ask a digital assistant for information.

Intelligent assistance

Cortana is an intelligent assistant that saves people time. She answers questions, provides context, helps manage calendars and complex schedules, emails, notifications and more.

Diverse workstyles

Windows 10 and Office 365 equip users with a diverse toolkit of apps and services, giving individuals and teams flexibility to create and communicate.

Nearby Sharing

Using Nearby Sharing in Microsoft Edge, File Explorer, OneNote and other Windows apps, users can quickly transmit documents, files and web pages to other Windows 10 PCs.

Windows 10 for organisations and technology

Endpoint protection

Comprehensive endpoint management that simplifies identity, device and application management - powered by the cloud.

Device management

With flexible device management options, IT can deploy, manage and update devices anywhere employees need to work.

Modern management

Modernise at your own pace by transitioning some workloads to Intune, while continuing to use Configuration Manager for on-premises workloads.

Attack surface reduction

The total surface area of attack is reduced by eliminating the exploit options and pathways that your adversaries depend on the most.

Threat and vulnerability management

Empower security teams to discover, prioritise and remediate vulnerabilities, and misconfigurations.

Information protection

Windows delivers the capabilities you need to protect your information, at rest and in use, from the accidental leaks and unauthorised access.

Automatic upgrades

Windows 10 automatically manages upgrades and updates, freeing up IT resources to focus on business-critical tasks.

Building unified, high-performing organisations with Microsoft Teams

Many organisations are already using Microsoft 365, but often these tools are underutilised, used in isolation, or not used at all. This is where Microsoft Teams - the new hub for collaboration and communication within Microsoft 365 – becomes an enabler of true collaboration for the modern workplace. With Teams, everything comes together in a single shared workspace where employees can chat, meet, share files, and work with business apps to realise breakthrough teamwork.

Ready to move to Teams?

Contact a Data#3 Collaboration Specialist to learn more, or explore how, a **Modern Meetings Proof of Concept**, can help your organisation shift to **Microsoft Teams** with ease.

Microsoft Teams for users and teams

Efficient communications

It's simple for teams to communicate in real-time, make fast decisions and share content in an open and transparent way.

Flexibility

When tools are integrated with existing business applications, work happens faster, enabling a frictionless communication and collaboration experience.

Decision making

Employees have access to full conversation history, files, people and apps in one shared workspace – ultimately spending less time searching and more time making decisions.

Time-saving

Microsoft Teams enables threaded conversations within a channel to keep conversations organised and key stakeholders informed. Work that has traditionally required an in-person meeting can happen in the channel instead.

Microsoft Teams for organisations and technology

IT cost savings

Save money by reducing or eliminating redundant third-party technologies, infrastructure and IT support requirements

Improved management

Simplified device and application configuration, provisioning and management creates efficiencies that save time for both IT and users.

Security

Microsoft Teams incorporates industry-leading security and compliance measures, including two-factor authentication, single sign-on through Active Directory and data encryption for at-rest and in-transit data in company cloud storage and email. You benefit from the Office 365 hyper-scale, enterprise grade cloud.

Increasing productivity and maximising ROI with Microsoft Surface

Workplaces are becoming increasingly mobile which requires a new approach to workplace technology. As devices and software evolve with new capabilities to support these workstyles, the Microsoft Surface family is fusing hardware and software to enhance individual productivity. From Surface Go, the ultimate mobile worker tool, to the new Surface Hub 2, these devices put a world of powerful features and productivity tools at your fingertips.

Data#3 Deploy Assist

Data#3's Deploy Assist program provides eligible organisations with up to \$20,000 in funding to help you get the most from your Microsoft Surface devices with Microsoft 365. This program funds Data#3's team to assist you with streamlining the adoption of Surface devices by minimising the cost of deployment, accelerating productivity and maximising the return of investment for Surface devices in your organisation.

Workers realised nearly five hours in weekly productivity gains using Microsoft 365 on Surface, equating to more than 12% of the average workweek¹⁵.

Microsoft Surface for users and teams

Collaboration

Collaborate with colleagues in the office or on the go. Stunning touchscreen PixelSense™ display and easy editing with Surface Pen drive innovation and new ideas.

Productivity

Surface devices are designed with mobile productivity in mind. Your team will do their best work from anywhere with exceptional battery life and simplified personal and group collaboration.

Teamwork

A digital whiteboard and meetings platform, all-in-one. Surface Hub 2 is a collaborative computing device ready to empower your teams, making in-person and remote collaboration more engaged and personal.

Interoperability

Designed and innovated by Microsoft, Surface is engineered to deliver the best experiences across the suite of Office apps.

Microsoft Surface for organisations and technology

Improved management

With Surface you can tackle deployment requirements with simplified rollouts, durable hardware and predictable device costs to make fleet management easy.

Employee experience

When surveyed, around 20% of respondents indicated Surface improved employee retention, employee satisfaction and positioned their organisation as a top employer¹⁴.

Security and compliance

Surface delivers a solution that enhances mobility and teamwork, while concurrently meeting the security needs of businesses. For enhanced protection, Microsoft write their own UEFI code instead of leveraging a third party's – one of the few OEMs to do so.



Governance and the modern workplace

As critical as the applications and devices that make up the modern workplace are, they are underpinned by a sound corporate governance strategy. Organisations must create a model that aligns key business processes, organisational structure, compliance requirements, roles and responsibilities, permissions and security to the implementation and adoption of the new devices and tools. Without this, the risk and exposure to an organisation in the long run can be irreversible.

When an agency in the mining industry neglected to define boundaries around Teams access, they inadvertently provided access to internal conversations and IP to offshore government representatives and their joint venture partners. The risk to the business was immense but could have been easily avoided with a governance strategy in place.

Governance for users and teams

Communications

With everyone having an understanding of the governing rules for managing calls, chat and video conferencing, you can ensure user confidence and secure communication.

Third party access

Defining the controls around access for third parties will ensure the company assets are protected while enabling teams to seamlessly work with external suppliers and contractors.

Team boundaries

Clear rules around application use, rooms and channels will allow employees to make optimal use of solutions while still allowing effective monitoring and management of the platform.

Governance for organisations and technology

Information architecture

Avoid information sprawl with a records management strategy to ensure everything is audited, stored and managed properly, with perimeter, boundary and security settings shaped to the strategy.

Multiple brands

Creating boundaries between legal entities will reduce the chances of IP being shared with other areas of the business.

The wider Microsoft ecosystem


Consider all of the applications within your environment, and how they fit together. When using additional services such as Azure, Microsoft 365 and Power Platform, the complexity and requirements can increase significantly.

Ready to inject best practice Microsoft governance into your organisation?

Business Aspect, a Data#3 company, provides strategy and governance consulting, with our adoption and transition services to provide comprehensive solutions for Office 365, Teams and the broader cloud ecosystem. [Get in contact](#) with our team to learn more about the ways our governance strategies will ensure a seamless deployment of all Microsoft applications across your organisation.

A group of business professionals are seated around a wooden table in a meeting room. They are looking at laptops and papers, engaged in a discussion. A large purple circular overlay is on the left side of the image, containing white text. The background shows a modern office environment with a bicycle parked on the left and a wall with charts on the right.

**Ready to
experience
the power of
collaboration
in the cloud?**



The integrated Microsoft ecosystem delivers true mobility and collaboration capabilities for the modern workplace. Bringing together the best-in-class productivity of Microsoft 365, Teams and Windows 10 - with advanced security, device management and governance capabilities to help safeguard your business - a successful Microsoft deployment will contribute to all-up productivity and long-term business value.

While the technology is essential, one of the most critical factors for this transformation is the culture of the business. It takes a systematic approach and application of knowledge, tools and resources to deal with change and ensure widespread adoption. However, it can be difficult and people often resist. To get there, new processes, products and business strategies must be put in place to minimise negative outcomes.

Enabling digital transformation with Data#3 and Microsoft

We help accelerate the modern workplace journey, helping organisations better support the needs and workstyles of all employees—making them truly empowered in the evolving digital age.

Our extensive knowledge of the Microsoft ecosystem offers the most effective and efficient way to ensure that your organisation is on the right page when it comes to implementing solutions tailored to fit your business. From pre-planning to go-live and adoption, we ensure your Microsoft investment continues to pay dividends for years to come.

If you answer yes to any of these questions, then it is likely time to review your collaboration technology:

Are your current collaboration solutions offering the best experience?

Are you using some Microsoft products, but want to extend that investment?

Does shadow data and IT exist in your business?

Is security a bigger problem than ever?

Are you operating with a patchwork of systems?

Have you outgrown your legacy solutions?

Next steps for new thinking

As Microsoft's largest Australian partner, Data#3 is the safe pair of hands when looking to deploy Microsoft across your organisation. We're the only partner able to provide complete end-to-end support for your modern workplace initiatives with comprehensive strategies traversing the entire Microsoft cloud ecosystem – including Office 365 Adoption and Implementation Roadmap services. Beyond IT management, our engagements draw in an organisation's risk and compliance teams, business and technology leadership teams and other key stakeholders to ensure all aspects are covered.

1. Teamwork assessment

Our Teamwork Assessment facilitates and focuses discussions on investments that can improve employee productivity and engagement. This includes identifying use cases, creating strategic alignment, and defining actionable roadmaps that deliver transformational business value.

2. Security Strategy Workshop

This complimentary* 3-day engagement, led by Data#3 Security specialists in partnership with Microsoft, is a comprehensive analysis of cloud security against known and suspected security threats – including shadow data and IT. The result is a thorough evaluation of how effectively security is being governed, monitored and managed in your environment.

3. Modern Meeting Proof of Concept (PoC)

Apply for funding through our Deploy Assist program to run a Modern Meetings PoC. We'll integrate Surface devices (including Surface Hub) and Microsoft Teams in a test environment and walk through pre-prepared scenarios to showcase how your team can be more productive.

4. Get in touch

Simply, get in contact with our team to learn more about the ways we ensure a flawless deployment of Microsoft across your organisation.

Data#3

 1300 23 28 23

 facebook.com/Data3Limited

 twitter.com/Data3Limited

 linkedin.com/company/data3/

 youtube.com/user/data3limited

Explore further

Visit our [knowledge centre](#) to extend your understanding of Microsoft for the enterprise.

Articles

[Microsoft Teams for the Modern Classroom: It's all academic](#)

[The challenges of integration in an app-driven modern workplace](#)

[What's the difference between Microsoft Teams and Skype for Business?](#)

[Moving from Skype for Business to Microsoft Teams](#)

[Collaborate with futuristic applications on Surface Hub 2](#)

[Why upgrade to Microsoft 365 E5 for improved security](#)

[Tackling cloud app security with Microsoft 365](#)

[How to achieve mobile productivity without sacrificing security](#)

[Make the Move to Microsoft Teams](#)

[Clinging to the Windows 7 Ledge: Are You Ready to Make the Leap to Windows 10?](#)

eBook

[The Secrets of High-Performing Teams... Wherever They're Located](#)

Customer Stories

[Melbourne City Mission](#)

[Ormiston College](#)

[Local Agency](#)

[Office of Public Prosecutions](#)

[iNova Pharmaceuticals](#)

Sources

- ¹ Glassdoor (2017). Two-Thirds Of American Workers Would Be Better Employees If They Got More Sleep, According To Glassdoor Survey. [Online]
Available at: <https://www.prnewswire.com/news-releases/two-thirds-of-american-workers-would-be-better-employees-if-they-got-more-sleep-according-to-glassdoor-survey-300542688.html>
- ² Harvard Business Review (2016). Collaborative Overload. [Online]
Available at: <https://hbr.org/2016/01/collaborative-overload>
- ³ Harvard Business Review (2016). Collaborative Overload. [Online]
Available at: <https://hbr.org/2016/01/collaborative-overload>
- ⁴ Gallup (2017). The right culture: not just about employee satisfaction. [Online]
Available at: <https://www.gallup.com/workplace/236366/right-culture-not-employee-satisfaction.aspx>
- ⁵ Deloitte (2017). The Collaborative Economy. [Online]
Available at: <https://www2.deloitte.com/content/dam/Deloitte/au/Documents/Economics/deloitte-au-economics-collaborative-economy-google-170614.pdf>
- ⁶ Dell EMC (2016), Realizing 2030: The Future of Work. [Online]
Available at: <https://www.dell EMC.com/en-us/workforce-solutions/purposedrivendesigns.htm#section=next-decade>
- ⁷ Microsoft (2019). Gartner names Microsoft a Leader in 2019 Endpoint Protection Platforms Magic Quadrant. [Online]
Available at: <https://www.microsoft.com/security/blog/2019/08/23/gartner-names-microsoft-a-leader-in-2019-endpoint-protection-platforms-magic-quadrant/>
- ⁸ IDG (2019). Succeeding in the roaring tech twenties! [Online]
Available at: <https://www.idg.com.au/mediareleases/35523/succeeding-in-the-roaring-tech-twenties/>
- ⁹ IDG (2019). Succeeding in the roaring tech twenties! [Online] Available at: <https://www.idg.com.au/mediareleases/35523/succeeding-in-the-roaring-tech-twenties/>
- ¹⁰ Microsoft (2019). The Total Economic Impact of Microsoft Defender ATP. [Online]
Available at: <https://query.prod.cms.rt.microsoft.com/cms/api/am/binary/RE3i5Ev>
- ¹¹ McKinsey Global Institute (2012). The Social Economy. [Online]
Available at: <https://www.mckinsey.com/industries/technology-media-and-telecommunications/our-insights/the-social-economy>
- ¹² IWG (2019). The IWG global workspace survey. [Online]
Available at: <https://assets.regus.com/pdfs/iwg-workplace-survey/iwg-workplace-survey-2019.pdf>
- ¹³ Forrester Consulting (2017). The Total Economic Impact Of Microsoft Windows Defender Advanced. [Online]
Available at: <https://info.microsoft.com/WNDWS-Forrester-TEI-Registration.html>
- ¹⁴ Forrester (2018). Maximizing Your ROI From Microsoft 365 Enterprise With Microsoft Surface. [Online]
Available at: http://info.microsoft.com/rs/157-GQE-382/images/Spotlight_Maximizing%20Your%20ROI%20From%20Microsoft%20365%20Enterprise%20With%20Microsoft%20Surface_May%202018_FINAL_en-us.pdf
- ¹⁵ Microsoft (2018). Maximizing Your ROI From Microsoft 365 Enterprise With Microsoft Surface. [Online]
Available at: http://info.microsoft.com/rs/157-GQE-382/images/Spotlight_Maximizing%20Your%20ROI%20From%20Microsoft%20365%20Enterprise%20With%20Microsoft%20Surface_May%202018_FINAL_en-us.pdf